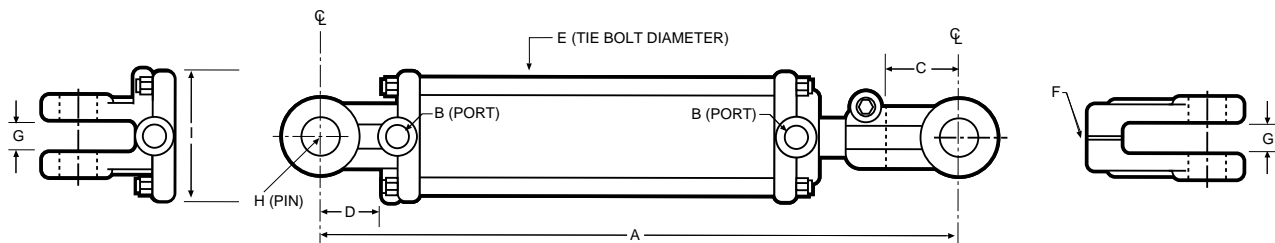


FEATURES:

- Ductile iron piston.
- Ductile iron gland, drilled oil passages.
- Honed steel tube, precision finished for extended seal life.
- High tensile, hard chrome plate rod.
- Ductile iron end mounts, female clevises with pins and clips included.
- Tube Seal: O-ring
- Rod Seal: Deep polypak with B lip design; metal canned wiper.
- Piston Seal: TFE Teflon Glass-filled with O-ring expander.
- All Seals: Manufactured to US specifications.



ORDER NO.	MFGR. NO.	BORE	STROKE	A	B	C	D	E	F	G	H
HTR-2008	2008TC ASAE	2	8	20.25	3/8	2 1/8	1 5/8	.360	1.125-12 UNF	2	1
HTR-2006	2006TC	2	6	16.25	3/8	2 1/8	1 5/8	.360	1.125-12 UNF	2	1
HTR-2010	2010TC	2	10	20.25	3/8	2 1/8	1 5/8	.360	1.125-12 UNF	2	1
HTR-2012	2012TC	2	12	22.25	3/8	2 1/8	1 5/8	.360	1.125-12 UNF	2	1
HTR-2508	2508TC ASAE	2.5	8	20.25	3/8	2 1/8	1 5/8	.360	1.125-12 UNF	2	1
HTR-3008	3008TC ASAE	3	8	20.25	1/2	2 1/8	1 5/8	.430	1.25-12 UNF	2	1
HTR-3016	3016TC ASAE	3	16	31.50	1/2	2 1/8	1 5/8	.430	1.25-12 UNF	2	1
HTR-3010	3010TC	3	10	31.50	1/2	2 1/8	1 5/8	.430	1.25-12 UNF	2	1
HTR-3012	3012TC	3	12	22.25	1/2	2 1/8	1 5/8	.430	1.25-12 UNF	2	1
HTR-3016	3016TC	3	16	26.25	1/2	2 1/8	1 5/8	.430	1.25-12 UNF	2	1
HTR-3508	3508TC ASAE	3.5	8	20.25	1/2	2 1/8	1 5/8	.430	1.25-12 UNF	2 1/4	1 1/8
HTR-3516	3516TC ASAE	3.5	16	31.25	1/2	2 1/8	1 5/8	.430	1.25-12 UNF	2 1/4	1 1/8
HTR-3510	3510TC	3.5	10	29.25	1/2	2 1/8	1 5/8	.430	1.25-12 UNF	2 1/4	1 1/8
HTR-3516	3516TC	3.5	16	26.25	1/2	2 1/8	1 5/8	.430	1.25-12 UNF	2 1/4	1 1/8
HTR-4008	4008TC ASAE	4	8	20.25	1/2	2 1/8	1 5/8	1/2	1.25-12 UNF	2 1/4	1 1/8
HTR-4016	4016TC ASAE	4	16	31.50	1/2	2 1/8	1 5/8	1/2	1.25-12 UNF	2 1/4	1 1/8
HTR-4010	4010TC	4	10	20.25	1/2	2 1/8	1 5/8	1/2	1.25-12 UNF	2 1/4	1 1/8
HTR-4024	4024-2TC	4	24	34.25	1/2	2 1/8	1 5/8	1/2	1.25-12 UNF	2 1/4	1 1/8
HTR-4024 ²	4024TC	4	24	34.25	1/2	2 1/8	1 5/8	1/2	1.25-12 UNF	2 1/4	1 1/8