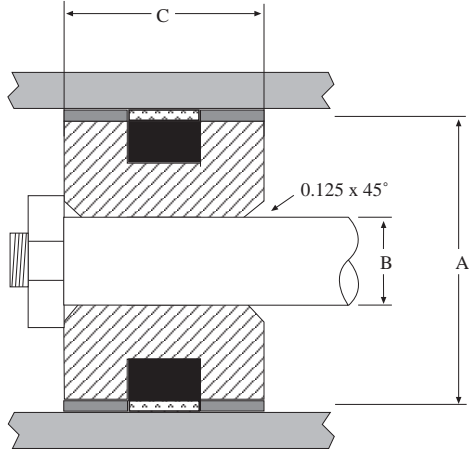


# STYLE PA UNITIZED PISTON

The PA Unitized Pistons are designed to handle a broad range of application parameters. The piston body is machined to exact dimensions and is constructed using four components: High strength steel body, non-metallic bearing, rubber loading ring and filled PTFE seal ring. The non-metallic bearing is molded to the piston using a special proprietary process.



PISTON INFORMATION	
TEMPERATURE RANGE	-40° TO +275° F
MAX PRESSURE	5,000 PSI
MAX VELOCITY	3 ft/sec

PART NUMBERS

PA - 2.00 X 0.75 X 1.00  
 |        \        /        /  
 Piston   Bore   Ht.   Width  
 Seal

Part Number	A	B	C	List Price
	Bore Diameter Tol. +0.002/-0	Hole Diameter +0.002/-0	Piston Width Tol. +0.002/-0	
PA-2.00X0.75X1.00	2.00	.75	1.00	\$ 87.46
PA-2.25X1.00X1.00	2.25	1.00	1.00	95.80
PA-2.50X1.00X1.00	2.50	1.00	1.00	104.13
PA-3.00X1.00X1.00	3.00	1.00	1.00	116.62
PA-3.50X1.00X1.50	3.50	1.00	1.50	133.29
PA-4.00X1.25X1.50	4.00	1.25	1.50	141.62