

RETAINER RINGS

Spiral Type Retainer Rings

Part Number	Bore	Ring OD	Radial Wall	Thickness	List Price
MSL-32	32.0	34.5	3.0	0.80	\$ 8.75
MSL-34	34.0	36.3	2.7	0.62	9.18
MSL-54	52.0	54.8	3.0	0.80	18.03
MSL-74	74.0	74.0	3.5	1.00	26.45



Lock Wire

Part Number	Description	List Price
MLW-2	MLW - 2 mm Round Cross Section- Sold per inch	\$ 0.27
MLW-3	MLW - 3 mm Round Cross Section- Sold in 250 mm sections	11.55

Internal Retainer Rings

Part Number	Bore	Ring OD	Thickness	List Price
M300-30	30.0	32.1	1.20	\$ 0.95
M300-32	32.0	34.4	1.20	2.51
M300-42	42.0	45.5	1.30	3.50
M300-45	45.0	48.5	1.75	3.74
M300-47	47.0	50.5	1.75	3.81
M300-48	48.0	51.5	1.75	3.81
M300-50	50.0	54.2	2.00	3.89
M300-52	52.0	56.2	2.00	4.18
M300-55	55.0	59.2	1.50	4.04
M300-60	60.0	64.2	2.00	4.28
M300-62	62.0	66.2	2.00	4.40
M300-72	72.0	76.5	2.50	5.10
M300-80	80.0	84.5	2.50	7.06
M300-82	82.0	87.5	2.50	7.13
M300-130	130.0	137.0	4.00	11.34



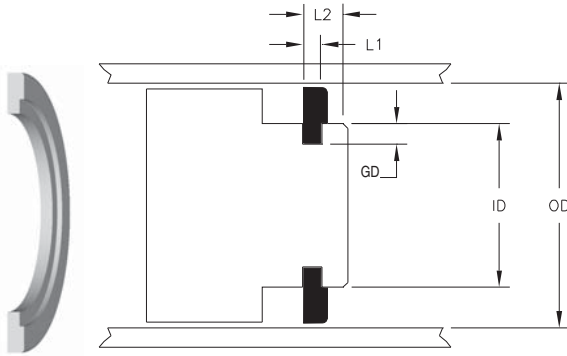
External Retainer Rings

Part Number	Shaft Diam	Ring ID	Thickness	List Price
M310-13	13.0	11.9	1.00	\$ 2.02
M310-14	14.0	12.9	1.00	2.02
M310-25	25.0	23.0	1.20	2.17
M310-28	28.0	25.9	1.50	2.46
M310-30	30.0	27.9	1.50	2.77
M310-35	35.0	32.2	1.50	1.12
M310-45	45.0	41.5	1.75	4.28
M310-50	50.0	45.8	2.00	5.44
M310-60	60.0	55.8	2.00	5.84
M310-65	65.0	60.8	2.50	3.19



STYLE MSR U-SEAL RETAINER RINGS

These rings are split for ease of installation and are retained in a groove. Their use is primarily to retain a single acting piston seals. Commonly are used with MUFN style piston seals.

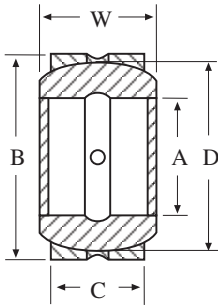


SEAL INFORMATION

MATERIAL	ACETAL
TEMPERATURE RANGE	-22° TO +212° F
PART NUMBER	(Prefix) - (OD) X (ID)

Part Number	ID	OD	L1	L2	Groove Depth	List Price
MSR-63X50	50	63	3.30	6.48	2.10	\$ 4.48
MSR-70X50	50	70	3.30	6.48	2.10	4.17
MSR-90X70	70	90	3.30	6.48	2.10	5.18
MSR-104.5X85	85	104.5	3.30	6.48	2.10	8.98
MSR-105X85	85	105	4.60	6.48	2.10	8.08
MSR-110X90	90	110	3.30	6.48	2.10	8.77
MSR-115X95	95	115	3.30	6.48	2.10	8.63

STYLE MHH SELF ALIGNING BEARINGS



Suffix:
2RS = Sealed Bearings

SEAL INFORMATION

MATERIAL

CARBON
CHROMIUM STEEL

Part Number	A	B	W	C	D	List Price
MHH20ES	20	35	16	12	29	\$ 26.78
MHH20ES2RS	20	35	16	12	29	30.31
MHH25ES	25	42	20	16	35.5	33.34
MHH25ES2RS	25	42	20	16	35.5	31.11
MHH30ES	30	47	22	18	40.7	35.29
MHH30ES2RS	30	47	22	18	40.7	44.15
MHH35ES	35	55	25	20	47	45.72
MHH35ES2RS	35	55	25	20	47	44.15
MHH40ES	40	62	28	22	53	50.45
MHH40ES2RS	40	62	28	22	53	43.30
MHH45ES2RS	45	68	32	25	60	77.90
MHH50ES	50	75	35	28	66	73.68
MHH50ES2RS	50	75	35	28	66	143.61
MHH60ES	60	90	44	36	80	113.80
MHH70ES	70	105	49	40	92	170.61
MHH70ES2RS	70	105	49	30	92	143.61
MHH80ES	80	120	55	45	105	186.22