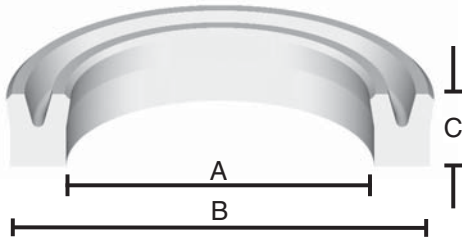


# STYLE MUU SYMMETRICAL U-SEALS

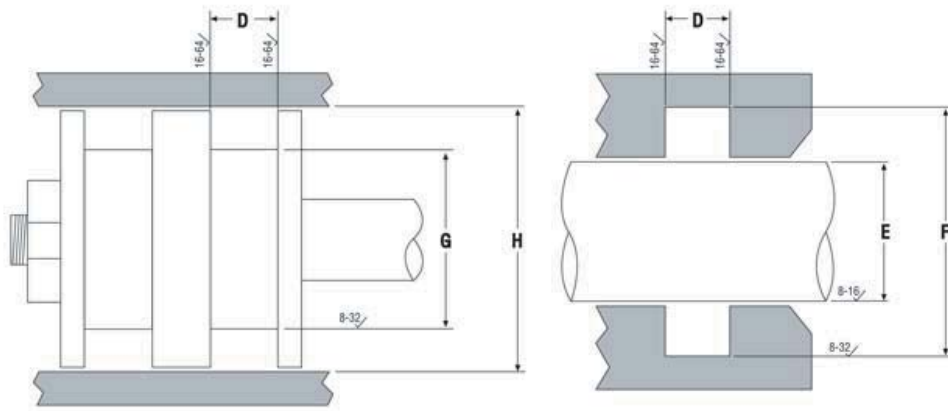
Utilizing tough polyurethane, these seals possess excellent wear and abrasion resistance. Symmetrical in design, they can be used in rod or piston applications. E= European Urethane.



### PART NUMBERS

**MUU - 4 X 10 X 4**  
 Style Prefix    I.D.    O.D.    Height

SEAL INFORMATION	
MATERIAL	URETHANE
TEMPERATURE RANGE	-22° TO +212° F
PRESSURE RANGE	0 TO 5,000 PSI
PART NUMBER	(Prefix) - (ID) X (OD) X (H)



Part Number	A Nom. I.D.	B Nom. O.D.	C Nom. Ht.	D Groove Width	E Rod Diameter	F Housing Diameter	G Groove Diameter	H Bore Diameter	List Price
MUU-4X10X4	4	10	4	4.5 $\begin{matrix} +0.300 \\ 0.000 \end{matrix}$	4 $\begin{matrix} -0.010 \\ -0.028 \end{matrix}$	10 $\begin{matrix} 0.000 \\ -0.200 \end{matrix}$	4 $\begin{matrix} 0.000 \\ -0.048 \end{matrix}$	10 $\begin{matrix} +0.036 \\ 0.000 \end{matrix}$	\$ 3.00
MUU-4X10X4.5	4	10	4.5	5 $\begin{matrix} +0.300 \\ 0.000 \end{matrix}$	4 $\begin{matrix} -0.010 \\ -0.028 \end{matrix}$	10 $\begin{matrix} 0.000 \\ -0.200 \end{matrix}$	4 $\begin{matrix} 0.000 \\ -0.048 \end{matrix}$	10 $\begin{matrix} +0.036 \\ 0.000 \end{matrix}$	3.00
MUU-5X11X5	5	11	5	5.7 $\begin{matrix} +0.300 \\ 0.000 \end{matrix}$	5 $\begin{matrix} -0.010 \\ -0.028 \end{matrix}$	11 $\begin{matrix} 0.000 \\ -0.200 \end{matrix}$	5 $\begin{matrix} 0.000 \\ -0.048 \end{matrix}$	11 $\begin{matrix} +0.043 \\ 0.000 \end{matrix}$	7.49
MUU-5X12X6	5	12	6	7 $\begin{matrix} +0.300 \\ 0.000 \end{matrix}$	5 $\begin{matrix} -0.010 \\ -0.028 \end{matrix}$	12 $\begin{matrix} 0.000 \\ -0.200 \end{matrix}$	5 $\begin{matrix} 0.000 \\ -0.048 \end{matrix}$	12 $\begin{matrix} +0.043 \\ 0.000 \end{matrix}$	2.87
MUU-5X15X8	5	15	8	9 $\begin{matrix} +0.300 \\ 0.000 \end{matrix}$	5 $\begin{matrix} -0.010 \\ -0.028 \end{matrix}$	15 $\begin{matrix} 0.000 \\ -0.200 \end{matrix}$	5 $\begin{matrix} 0.000 \\ -0.048 \end{matrix}$	15 $\begin{matrix} +0.043 \\ 0.000 \end{matrix}$	13.10
MUU-6X12X4	6	12	4	5 $\begin{matrix} +0.300 \\ 0.000 \end{matrix}$	6 $\begin{matrix} -0.010 \\ -0.028 \end{matrix}$	12 $\begin{matrix} 0.000 \\ -0.200 \end{matrix}$	6 $\begin{matrix} 0.000 \\ -0.048 \end{matrix}$	12 $\begin{matrix} +0.043 \\ 0.000 \end{matrix}$	3.48
MUU-6X12X6	6	12	6	7 $\begin{matrix} +0.300 \\ 0.000 \end{matrix}$	6 $\begin{matrix} -0.010 \\ -0.028 \end{matrix}$	12 $\begin{matrix} 0.000 \\ -0.200 \end{matrix}$	6 $\begin{matrix} 0.000 \\ -0.048 \end{matrix}$	12 $\begin{matrix} +0.043 \\ 0.000 \end{matrix}$	3.48
MUU-6X12X8	6	12	8	9 $\begin{matrix} +0.300 \\ 0.000 \end{matrix}$	6 $\begin{matrix} -0.010 \\ -0.028 \end{matrix}$	12 $\begin{matrix} 0.000 \\ -0.200 \end{matrix}$	6 $\begin{matrix} 0.000 \\ -0.048 \end{matrix}$	12 $\begin{matrix} +0.043 \\ 0.000 \end{matrix}$	4.95
MUU-8X14X6	8	14	6	7 $\begin{matrix} +0.300 \\ 0.000 \end{matrix}$	8 $\begin{matrix} -0.013 \\ -0.035 \end{matrix}$	14 $\begin{matrix} 0.000 \\ -0.200 \end{matrix}$	8 $\begin{matrix} 0.000 \\ -0.058 \end{matrix}$	14 $\begin{matrix} +0.043 \\ 0.000 \end{matrix}$	2.87
MUU-8X15X8	8	15	8	9 $\begin{matrix} +0.300 \\ 0.000 \end{matrix}$	8 $\begin{matrix} -0.013 \\ -0.035 \end{matrix}$	15 $\begin{matrix} 0.000 \\ -0.200 \end{matrix}$	8 $\begin{matrix} 0.000 \\ -0.058 \end{matrix}$	15 $\begin{matrix} +0.043 \\ 0.000 \end{matrix}$	3.00

# STYLE MUU SYMMETRICAL U-SEALS



U-SEALS

Part Number	A Nom. I.D.	B Nom. O.D.	C Nom. Ht.	D Groove Width	E Rod Diameter	F Housing Diameter	G Groove Diameter	H Bore Diameter	List Price
MUU-8X16X5.7	8	16	5.7	6.3 +0.300 0.000	8 -0.013 -0.035	16 0.000 -0.200	8 0.000 -0.058	16 +0.043 0.000	\$ 2.87
MUU-10X16X4	10	16	4	4.5 +0.300 0.000	10 -0.013 -0.035	16 0.000 -0.200	10 0.000 -0.058	16 +0.043 0.000	4.39
MUU-10X16X6	10	16	6	7 +0.300 0.000	10 -0.013 -0.035	16 0.000 -0.200	10 0.000 -0.058	16 +0.043 0.000	9.79
MUU-10X18X5.5	10	18	5.5	6.5 +0.300 0.000	10 -0.013 -0.035	18 0.000 -0.200	10 0.000 -0.058	18 +0.043 0.000	3.33
MUU-10X18X6	10	18	6	7 +0.300 0.000	10 -0.013 -0.035	18 0.000 -0.200	10 0.000 -0.058	18 +0.043 0.000	3.33
MUU-10X20X8	10	20	8	9 +0.300 0.000	10 -0.013 -0.035	20 0.000 -0.200	10 0.000 -0.058	20 +0.052 0.000	3.69
MUU-11.2X19.2X5	11.2	19.2	5	5.7 +0.300 0.000	11.2 -0.016 -0.043	19.2 0.000 -0.200	11.2 0.000 -0.070	19.2 +0.052 0.000	3.80
MUU-11.2X21.2X8	11.2	21.2	8	9 +0.300 0.000	11.2 -0.016 -0.043	21.2 0.000 -0.200	11.2 0.000 -0.070	21.2 +0.052 0.000	4.93
MUU-12X18X4.8	12	18	4.8	5.3 +0.300 0.000	12 -0.016 -0.043	18 0.000 -0.200	12 0.000 -0.070	18 +0.043 0.000	3.80
MUU-12X18X6	12	18	6	7 +0.300 0.000	12 -0.016 -0.043	18 0.000 -0.200	12 0.000 -0.070	18 +0.043 0.000	3.80
MUU-12X20X8	12	20	8	9 +0.300 0.000	12 -0.016 -0.043	20 0.000 -0.200	12 0.000 -0.070	20 +0.052 0.000	3.80
MUU-12X22X5	12	22	5	5.7 +0.300 0.000	12 -0.016 -0.043	22 0.000 -0.200	12 0.000 -0.070	22 +0.052 0.000	3.69
MUU-12X22X7	12	22	7	8 +0.300 0.000	12 -0.016 -0.043	22 0.000 -0.200	12 0.000 -0.070	22 +0.052 0.000	4.61
MUU-12X22X8	12	22	8	9 +0.300 0.000	12 -0.016 -0.043	22 0.000 -0.200	12 0.000 -0.070	22 +0.052 0.000	4.61
MUU-14X20X4.8	14	20	4.8	5.3 +0.300 0.000	14 -0.016 -0.043	20 0.000 -0.200	14 0.000 -0.070	20 +0.052 0.000	3.48
MUU-14X22X5	14	22	5	5.7 +0.300 0.000	14 -0.016 -0.043	22 0.000 -0.200	14 0.000 -0.070	22 +0.052 0.000	4.18
MUU-14X22X6	14	22	6	7 +0.300 0.000	14 -0.016 -0.043	22 0.000 -0.200	14 0.000 -0.070	22 +0.052 0.000	4.04
MUU-14X24X8	14	24	8	9 +0.300 0.000	14 -0.016 -0.043	24 0.000 -0.200	14 0.000 -0.070	24 +0.052 0.000	3.80
MUU-15X25X5	15	25	5	5.7 +0.300 0.000	15 -0.016 -0.043	25 0.000 -0.200	15 0.000 -0.070	25 +0.052 0.000	6.00
MUU-15X25X8	15	25	8	9 +0.300 0.000	15 -0.016 -0.043	25 0.000 -0.200	15 0.000 -0.070	25 +0.052 0.000	4.49
MUU-16X22X4	16	22	4	4.5 +0.300 0.000	16 -0.016 -0.043	22 0.000 -0.200	16 0.000 -0.070	22 +0.052 0.000	3.80
MUU-16X22X5	16	22	5	5.7 +0.300 0.000	16 -0.016 -0.043	22 0.000 -0.200	16 0.000 -0.070	22 +0.052 0.000	3.80
MUU-16X24X5	16	24	5	5.7 +0.300 0.000	16 -0.016 -0.043	24 0.000 -0.200	16 0.000 -0.070	24 +0.052 0.000	4.04
MUU-16X25X7.1	16	25	7.1	8.25 +0.300 0.000	16 -0.016 -0.043	25 0.000 -0.200	16 0.000 -0.070	25 +0.052 0.000	6.12
MUU-16X26X5	16	26	5	5.7 +0.300 0.000	16 -0.016 -0.043	26 0.000 -0.200	16 0.000 -0.070	26 +0.052 0.000	4.39


**STYLE MUU SYMMETRICAL U-SEALS**

U-SEALS

Part Number	A Nom. I.D.	B Nom. O.D.	C Nom. Ht.	D Groove Width	E Rod Diameter	F Housing Diameter	G Groove Diameter	H Bore Diameter	List Price
MUU-16X26X8	16	26	8	9 +0.300 0.000	16 -0.016 -0.043	26 0.000 -0.200	16 0.000 -0.070	26 +0.052 0.000	\$ 5.31
MUU-17X25X10	17	25	10	11 +0.300 0.000	17 -0.016 -0.043	25 0.000 -0.200	17 0.000 -0.070	25 +0.052 0.000	4.61
MUU-18X25X5	18	25	5	5.7 +0.300 0.000	18 -0.016 -0.043	25 0.000 -0.200	18 0.000 -0.070	25 +0.052 0.000	5.07
MUU-18X26X5	18	26	5	5.7 +0.300 0.000	18 -0.016 -0.043	26 0.000 -0.200	18 0.000 -0.070	26 +0.052 0.000	5.66
MUU-18X26X6.5	18	26	6.5	7.5 +0.300 0.000	18 -0.016 -0.043	26 0.000 -0.200	18 0.000 -0.070	26 +0.052 0.000	4.49
MUU-18X26X8	18	26	8	9 +0.300 0.000	18 -0.016 -0.043	26 0.000 -0.200	18 0.000 -0.070	26 +0.052 0.000	7.45
MUU-18X28X8	18	28	8	9 +0.300 0.000	18 -0.016 -0.043	28 0.000 -0.200	18 0.000 -0.070	28 +0.052 0.000	4.49
MUU-18X30X8	18	30	8	9 +0.300 0.000	18 -0.016 -0.043	30 0.000 -0.200	18 0.000 -0.070	30 +0.052 0.000	4.95
MUU-18X34X8	18	34	8	9 +0.300 0.000	18 -0.016 -0.043	34 0.000 -0.200	18 0.000 -0.070	34 +0.062 0.000	9.97
MUU-20X28X4	20	28	4	4.5 +0.300 0.000	20 -0.020 -0.053	28 0.000 -0.200	20 0.000 -0.084	28 +0.052 0.000	4.73
MUU-20X28X5	20	28	5	5.7 +0.300 0.000	20 -0.020 -0.053	28 0.000 -0.200	20 0.000 -0.084	28 +0.052 0.000	5.83
MUU-20X28X8	20	28	8	9 +0.300 0.000	20 -0.020 -0.053	28 0.000 -0.200	20 0.000 -0.084	28 +0.052 0.000	4.84
MUU-20X30X8	20	30	8	9 +0.300 0.000	20 -0.020 -0.053	30 0.000 -0.200	20 0.000 -0.084	30 +0.052 0.000	5.07
MUU-20X30X10	20	30	10	11 +0.300 0.000	20 -0.020 -0.053	30 0.000 -0.200	20 0.000 -0.084	30 +0.052 0.000	5.07
MUU-20X32X7.5	20	32	7.5	8.5 +0.300 0.000	20 -0.020 -0.053	32 0.000 -0.200	20 0.000 -0.084	32 +0.062 0.000	4.73
MUU-20X35X12	20	35	12	13 +0.300 0.000	20 -0.020 -0.053	35 0.000 -0.200	20 0.000 -0.084	35 +0.062 0.000	5.31
MUU-20X40X10	20	40	10	11 +0.300 0.000	20 -0.020 -0.053	40 0.000 -0.200	20 0.000 -0.084	40 +0.062 0.000	6.23
MUU-20X40X12	20	40	12	13 +0.300 0.000	20 -0.020 -0.053	40 0.000 -0.200	20 0.000 -0.084	40 +0.062 0.000	9.50
MUU-22X28X8	22	28	8	9 +0.300 0.000	22 -0.020 -0.053	28 0.000 -0.200	22 0.000 -0.084	28 +0.052 0.000	4.49
MUU-22X30X6	22	30	6	7 +0.300 0.000	22 -0.020 -0.053	30 0.000 -0.200	22 0.000 -0.084	30 +0.052 0.000	5.07
MUU-22X30X7	22	30	7	8 +0.300 0.000	22 -0.020 -0.053	30 0.000 -0.200	22 0.000 -0.084	30 +0.052 0.000	5.48
MUU-22X30X10	22	30	10	11 +0.300 0.000	22 -0.020 -0.053	30 0.000 -0.200	22 0.000 -0.084	30 +0.052 0.000	5.35
MUU-22X32X8	22	32	8	9 +0.300 0.000	22 -0.020 -0.053	32 0.000 -0.200	22 0.000 -0.084	32 +0.062 0.000	5.31
MUU-22X35X10	22	35	10	11 +0.300 0.000	22 -0.020 -0.053	35 0.000 -0.200	22 0.000 -0.084	35 +0.062 0.000	4.95
MUU-22.4X30X5	22.4	30	5	5.7 +0.300 0.000	22.4 -0.020 -0.053	30 0.000 -0.200	22.4 0.000 -0.084	30 +0.052 0.000	7.97




**STYLE MUU SYMMETRICAL U-SEALS**

U-SEALS

Part Number	A Nom. I.D.	B Nom. O.D.	C Nom. Ht.	D Groove Width	E Rod Diameter	F Housing Diameter	G Groove Diameter	H Bore Diameter	List Price
MUU-28X40X10	28	40	10	11 +0.300 0.000	28 -0.020 -0.053	40 0.000 -0.200	28 0.000 -0.084	40 +0.062 0.000	\$ 5.55
MUU-28X43X10	28	43	10	11 +0.300 0.000	28 -0.020 -0.053	43 0.000 -0.200	28 0.000 -0.084	43 +0.062 0.000	2.49
MUU-28X44X8	28	44	8	9 +0.300 0.000	28 -0.020 -0.053	44 0.000 -0.200	28 0.000 -0.084	44 +0.062 0.000	3.31
MUU-30X38X5	30	38	5	5.7 +0.300 0.000	30 -0.020 -0.053	38 0.000 -0.200	30 0.000 -0.084	38 +0.062 0.000	11.43
MUU-30X38X5.5	30	38	5.5	6.5 +0.300 0.000	30 -0.020 -0.053	38 0.000 -0.200	30 0.000 -0.084	38 +0.062 0.000	2.24
MUU-30X38X5.8	30	38	5.8	6.5 +0.300 0.000	30 -0.020 -0.053	38 0.000 -0.200	30 0.000 -0.084	38 +0.062 0.000	2.24
MUU-30X38X6	30	38	6	7 +0.300 0.000	30 -0.020 -0.053	38 0.000 -0.200	30 0.000 -0.084	38 +0.062 0.000	5.44
MUU-30X38X7	30	38	7	8 +0.300 0.000	30 -0.020 -0.053	38 0.000 -0.200	30 0.000 -0.084	38 +0.062 0.000	6.99
MUU-30X40X5	30	40	5	5.7 +0.300 0.000	30 -0.020 -0.053	40 0.000 -0.200	30 0.000 -0.084	40 +0.062 0.000	6.23
MUU-30X40X6	30	40	6	7 +0.300 0.000	30 -0.020 -0.053	40 0.000 -0.200	30 0.000 -0.084	40 +0.062 0.000	9.93
MUU-30X40X6.5	30	40	6.5	7.5 +0.300 0.000	30 -0.020 -0.053	40 0.000 -0.200	30 0.000 -0.084	40 +0.062 0.000	3.54
MUU-30X40X7	30	40	7	8 +0.300 0.000	30 -0.020 -0.053	40 0.000 -0.200	30 0.000 -0.084	40 +0.062 0.000	9.93
MUU-30X40X10	30	40	10	11 +0.300 0.000	30 -0.020 -0.053	40 0.000 -0.200	30 0.000 -0.084	40 +0.062 0.000	9.79
MUU-30X42X9	30	42	9	10 +0.300 0.000	30 -0.020 -0.053	42 0.000 -0.200	30 0.000 -0.084	42 +0.062 0.000	7.72
MUU-30X42X10	30	42	10	11 +0.300 0.000	30 -0.020 -0.053	42 0.000 -0.200	30 0.000 -0.084	42 +0.062 0.000	8.01
MUU-30X45X10	30	45	10	11 +0.300 0.000	30 -0.020 -0.053	45 0.000 -0.200	30 0.000 -0.084	45 +0.062 0.000	6.35
MUU-30X50X10	30	50	10	11 +0.300 0.000	30 -0.020 -0.053	50 0.000 -0.200	30 0.000 -0.084	50 +0.062 0.000	7.04
MUU-31.5X41.5X6	31.5	41.5	6	7 +0.300 0.000	31.5 -0.025 -0.064	41.5 0.000 -0.200	31.5 0.000 -0.100	41.5 +0.062 0.000	10.07
MUU-32X40X5	32	40	5	5.7 +0.300 0.000	32 -0.025 -0.064	40 0.000 -0.200	32 0.000 -0.100	40 +0.062 0.000	3.68
MUU-32X40X5.5	32	40	5.5	6.5 +0.300 0.000	32 -0.025 -0.064	40 0.000 -0.200	32 0.000 -0.100	40 +0.062 0.000	5.77
MUU-32X40X5.7	32	40	5.7	6.7 +0.300 0.000	32 -0.025 -0.064	40 0.000 -0.200	32 0.000 -0.100	40 +0.062 0.000	2.49
MUU-32X40X6	32	40	6	7 +0.300 0.000	32 -0.025 -0.064	40 0.000 -0.200	32 0.000 -0.100	40 +0.062 0.000	4.85
MUU-32X40X8	32	40	8	9 +0.300 0.000	32 -0.025 -0.064	40 0.000 -0.200	32 0.000 -0.100	40 +0.062 0.000	5.77
MUU-32X40X10	32	40	10	11 +0.300 0.000	32 -0.025 -0.064	40 0.000 -0.200	32 0.000 -0.100	40 +0.062 0.000	3.79
MUU-32X42X5.6	32	42	5.6	6.6 +0.300 0.000	32 -0.025 -0.064	42 0.000 -0.200	32 0.000 -0.100	42 +0.062 0.000	9.56

# STYLE MUU SYMMETRICAL U-SEALS



U-SEALS

Part Number	A Nom. I.D.	B Nom. O.D.	C Nom. Ht.	D Groove Width	E Rod Diameter	F Housing Diameter	G Groove Diameter	H Bore Diameter	List Price
MUU-32X42X5.8	32	42	5.8	6.8 +0.300 0.000	32 -0.025 -0.064	42 0.000 -0.200	32 0.000 -0.100	42 +0.062 0.000	\$ 4.17
MUU-32X42X10	32	42	10	11 +0.300 0.000	32 -0.025 -0.064	42 0.000 -0.200	32 0.000 -0.100	42 +0.062 0.000	5.55
MUU-32X45X10	32	45	10	11 +0.300 0.000	32 -0.025 -0.064	45 0.000 -0.200	32 0.000 -0.100	45 +0.062 0.000	6.56
MUU-32X46X10	32	46	10	11 +0.300 0.000	32 -0.025 -0.064	46 0.000 -0.200	32 0.000 -0.100	46 +0.062 0.000	10.24
MUU-32X47X10	32	47	10	11 +0.300 0.000	32 -0.025 -0.064	47 0.000 -0.200	32 0.000 -0.100	47 +0.062 0.000	7.73
MUU-35X42X8	35	42	8	9 +0.300 0.000	35 -0.025 -0.064	42 0.000 -0.200	35 0.000 -0.100	42 +0.062 0.000	6.00
MUU-35X43X6	35	43	6	7 +0.300 0.000	35 -0.025 -0.064	43 0.000 -0.200	35 0.000 -0.100	43 +0.062 0.000	3.32
MUU-35X45X5	35	45	5	5.7 +0.300 0.000	35 -0.025 -0.064	45 0.000 -0.200	35 0.000 -0.100	45 +0.062 0.000	4.55
MUU-35X45X6	35	45	6	7 +0.300 0.000	35 -0.025 -0.064	45 0.000 -0.200	35 0.000 -0.100	45 +0.062 0.000	9.37
MUU-35X45X7	35	45	7	8 +0.300 0.000	35 -0.025 -0.064	45 0.000 -0.200	35 0.000 -0.100	45 +0.062 0.000	9.37
MUU-35X45X8	35	45	8	9 +0.300 0.000	35 -0.025 -0.064	45 0.000 -0.200	35 0.000 -0.100	45 +0.062 0.000	6.35
MUU-35X45X10	35	45	10	11 +0.300 0.000	35 -0.025 -0.064	45 0.000 -0.200	35 0.000 -0.100	45 +0.062 0.000	9.23
MUU-35X48X10	35	48	10	11 +0.300 0.000	35 -0.025 -0.064	48 0.000 -0.200	35 0.000 -0.100	48 +0.062 0.000	7.28
MUU-35X50X8	35	50	8	9 +0.300 0.000	35 -0.025 -0.064	50 0.000 -0.200	35 0.000 -0.100	50 +0.062 0.000	7.96
MUU-35X50X10	35	50	10	11 +0.300 0.000	35 -0.025 -0.064	50 0.000 -0.200	35 0.000 -0.100	50 +0.062 0.000	6.79
MUU-35X55X10	35	55	10	11 +0.300 0.000	35 -0.025 -0.064	55 0.000 -0.200	35 0.000 -0.100	55 +0.074 0.000	7.64
MUU-35.5X45X6	35.5	45	6	7 +0.300 0.000	35.5 -0.025 -0.064	45 0.000 -0.200	35.5 0.000 -0.100	45 +0.062 0.000	9.37
MUU-36X45X10	36	45	10	11 +0.300 0.000	36 -0.025 -0.064	45 0.000 -0.200	36 0.000 -0.100	45 +0.062 0.000	8.60
MUU-36X46X7	36	46	7	8 +0.300 0.000	36 -0.025 -0.064	46 0.000 -0.200	36 0.000 -0.100	46 +0.062 0.000	5.55
MUU-36X46X7.5	36	46	7.5	8.5 +0.300 0.000	36 -0.025 -0.064	46 0.000 -0.200	36 0.000 -0.100	46 +0.062 0.000	4.46
MUU-36X46X10	36	46	10	11 +0.300 0.000	36 -0.025 -0.064	46 0.000 -0.200	36 0.000 -0.100	46 +0.062 0.000	4.46
MUU-38X45X5	38	45	5	5.7 +0.300 0.000	38 -0.025 -0.064	45 0.000 -0.200	38 0.000 -0.100	45 +0.062 0.000	6.79
MUU-38X48X6	38	48	6	7 +0.300 0.000	38 -0.025 -0.064	48 0.000 -0.200	38 0.000 -0.100	48 +0.062 0.000	10.89
MUU-38X50X9	38	50	9	10 +0.300 0.000	38 -0.025 -0.064	50 0.000 -0.200	38 0.000 -0.100	50 +0.062 0.000	4.74
MUU-38X50X10	38	50	10	11 +0.300 0.000	38 -0.025 -0.064	50 0.000 -0.200	38 0.000 -0.100	50 +0.062 0.000	3.74


**STYLE MUU SYMMETRICAL U-SEALS**
**U-SEALS**

Part Number	A Nom. I.D.	B Nom. O.D.	C Nom. Ht.	D Groove Width	E Rod Diameter	F Housing Diameter	G Groove Diameter	H Bore Diameter	List Price
MUU-38X58X10	38	58	10	11 +0.300 0.000	38 -0.025 -0.064	58 0.000 -0.200	38 0.000 -0.100	58 +0.074 0.000	\$ 3.31
MUU-40X48X8	40	48	8	9 +0.300 0.000	40 -0.025 -0.064	48 0.000 -0.200	40 0.000 -0.100	48 +0.062 0.000	3.16
MUU-40X50X5	40	50	5	5.7 +0.300 0.000	40 -0.025 -0.064	50 0.000 -0.200	40 0.000 -0.100	50 +0.062 0.000	4.73
MUU-40X50X6	40	50	6	7 +0.300 0.000	40 -0.025 -0.064	50 0.000 -0.200	40 0.000 -0.100	50 +0.062 0.000	10.89
MUU-40X50X6.5	40	50	6.5	7.5 +0.300 0.000	40 -0.025 -0.064	50 0.000 -0.200	40 0.000 -0.100	50 +0.062 0.000	6.23
MUU-40X50X8	40	50	8	9 +0.300 0.000	40 -0.025 -0.064	50 0.000 -0.200	40 0.000 -0.100	50 +0.062 0.000	6.23
MUU-40X50X10	40	50	10	11 +0.300 0.000	40 -0.025 -0.064	50 0.000 -0.200	40 0.000 -0.100	50 +0.062 0.000	6.35
MUU-40X52X6	40	52	6	7 +0.300 0.000	40 -0.025 -0.064	52 0.000 -0.200	40 0.000 -0.100	52 +0.074 0.000	4.04
MUU-40X52X9	40	52	9	10 +0.300 0.000	40 -0.025 -0.064	52 0.000 -0.200	40 0.000 -0.100	52 +0.074 0.000	10.38
MUU-40X55X10	40	55	10	11 +0.300 0.000	40 -0.025 -0.064	55 0.000 -0.200	40 0.000 -0.100	55 +0.074 0.000	11.55
MUU-40X56X8	40	56	8	9 +0.300 0.000	40 -0.025 -0.064	56 0.000 -0.200	40 0.000 -0.100	56 +0.074 0.000	3.74
MUU-40X56X10	40	56	10	11 +0.300 0.000	40 -0.025 -0.064	56 0.000 -0.200	40 0.000 -0.100	56 +0.074 0.000	3.31
MUU-40X60X10	40	60	10	11 +0.300 0.000	40 -0.025 -0.064	60 0.000 -0.200	40 0.000 -0.100	60 +0.074 0.000	5.55
MUU-40X60X12	40	60	12	13 +0.300 0.000	40 -0.025 -0.064	60 0.000 -0.200	40 0.000 -0.100	60 +0.074 0.000	12.01
MUU-40X60X13	40	60	13	14 +0.300 0.000	40 -0.025 -0.064	60 0.000 -0.200	40 0.000 -0.100	60 +0.074 0.000	3.74
MUU-40X60X18	40	60	18	19 +0.300 0.000	40 -0.025 -0.064	60 0.000 -0.200	40 0.000 -0.100	60 +0.074 0.000	8.08
MUU-40X65X12	40	65	12	13 +0.300 0.000	40 -0.025 -0.064	65 0.000 -0.200	40 0.000 -0.100	65 +0.074 0.000	8.64
MUU-42X50X8	42	50	8	9 +0.300 0.000	42 -0.025 -0.064	50 0.000 -0.200	42 0.000 -0.100	50 +0.062 0.000	6.23
MUU-42X52X6	42	52	6	7 +0.300 0.000	42 -0.025 -0.064	52 0.000 -0.200	42 0.000 -0.100	52 +0.074 0.000	4.80
MUU-42X52X9	42	52	9	10 +0.300 0.000	42 -0.025 -0.064	52 0.000 -0.200	42 0.000 -0.100	52 +0.074 0.000	6.58
MUU-43X63X10	43	63	10	11 +0.300 0.000	43 -0.025 -0.064	63 0.000 -0.200	43 0.000 -0.100	63 +0.074 0.000	4.58
MUU-45X55X6	45	55	6	7 +0.300 0.000	45 -0.025 -0.064	55 0.000 -0.200	45 0.000 -0.100	55 +0.074 0.000	14.01
MUU-45X55X6.5	45	55	6.5	7.5 +0.300 0.000	45 -0.025 -0.064	55 0.000 -0.200	45 0.000 -0.100	55 +0.074 0.000	7.04
MUU-45X55X10	45	55	10	11 +0.300 0.000	45 -0.025 -0.064	55 0.000 -0.200	45 0.000 -0.100	55 +0.074 0.000	7.04
MUU-45X56X7	45	56	7	8 +0.300 0.000	45 -0.025 -0.064	56 0.000 -0.200	45 0.000 -0.100	56 +0.074 0.000	14.78

# STYLE MUU SYMMETRICAL U-SEALS



U-SEALS

Part Number	A Nom. I.D.	B Nom. O.D.	C Nom. Ht.	D Groove Width	E Rod Diameter	F Housing Diameter	G Groove Diameter	H Bore Diameter	List Price
MUU-45X58X10	45	58	10	11 +0.300 0.000	45 -0.025 -0.064	58 0.000 -0.200	45 0.000 -0.100	58 +0.074 0.000	\$ 6.31
MUU-45X58X12	45	58	12	13 +0.300 0.000	45 -0.025 -0.064	58 0.000 -0.200	45 0.000 -0.100	58 +0.074 0.000	5.06
MUU-45X60X7.5	45	60	7.5	8.5 +0.300 0.000	45 -0.025 -0.064	60 0.000 -0.200	45 0.000 -0.100	60 +0.074 0.000	4.96
MUU-45X60X10	45	60	10	11 +0.300 0.000	45 -0.025 -0.064	60 0.000 -0.200	45 0.000 -0.100	60 +0.074 0.000	7.64
MUU-45X60X11	45	60	11	12 +0.300 0.000	45 -0.025 -0.064	60 0.000 -0.200	45 0.000 -0.100	60 +0.074 0.000	26.19
MUU-45X63X10	45	63	10	11 +0.300 0.000	45 -0.025 -0.064	63 0.000 -0.200	45 0.000 -0.100	63 +0.074 0.000	6.56
MUU-45X65X10	45	65	10	11 +0.300 0.000	45 -0.025 -0.064	65 0.000 -0.200	45 0.000 -0.100	65 +0.074 0.000	8.86
MUU-45X65X12	45	65	12	13 +0.300 0.000	45 -0.025 -0.064	65 0.000 -0.200	45 0.000 -0.100	65 +0.074 0.000	8.86
MUU-45X70X12	45	70	12	13 +0.300 0.000	45 -0.025 -0.064	70 0.000 -0.200	45 0.000 -0.100	70 +0.074 0.000	4.49
MUU-48X58X10	48	58	10	11 +0.300 0.000	48 -0.025 -0.064	58 0.000 -0.200	48 0.000 -0.100	58 +0.074 0.000	7.38
MUU-48X63X10	48	63	10	11 +0.300 0.000	48 -0.025 -0.064	63 0.000 -0.200	48 0.000 -0.100	63 +0.074 0.000	18.21
MUU-50X60X5	50	60	5	5.7 +0.300 0.000	50 -0.025 -0.064	60 0.000 -0.200	50 0.000 -0.100	60 +0.074 0.000	7.91
MUU-50X60X6	50	60	6	7 +0.300 0.000	50 -0.025 -0.064	60 0.000 -0.200	50 0.000 -0.100	60 +0.074 0.000	10.35
MUU-50X60X10	50	60	10	11 +0.300 0.000	50 -0.025 -0.064	60 0.000 -0.200	50 0.000 -0.100	60 +0.074 0.000	6.92
MUU-50X62X9	50	62	9	10 +0.300 0.000	50 -0.025 -0.064	62 0.000 -0.200	50 0.000 -0.100	62 +0.074 0.000	6.92
MUU-50X63X6	50	63	6	7 +0.300 0.000	50 -0.025 -0.064	63 0.000 -0.200	50 0.000 -0.100	63 +0.074 0.000	6.56
MUU-50X63X10	50	63	10	11 +0.300 0.000	50 -0.025 -0.064	63 0.000 -0.200	50 0.000 -0.100	63 +0.074 0.000	5.30
MUU-50X65X7.5	50	65	7.5	8.5 +0.300 0.000	50 -0.025 -0.064	65 0.000 -0.200	50 0.000 -0.100	65 +0.074 0.000	5.73
MUU-50X65X10	50	65	10	11 +0.300 0.000	50 -0.025 -0.064	65 0.000 -0.200	50 0.000 -0.100	65 +0.074 0.000	16.48
MUU-50X65X11	50	65	11	12 +0.300 0.000	50 -0.025 -0.064	65 0.000 -0.200	50 0.000 -0.100	65 +0.074 0.000	28.57
MUU-50X70X10	50	70	10	11 +0.300 0.000	50 -0.025 -0.064	70 0.000 -0.200	50 0.000 -0.100	70 +0.074 0.000	9.35
MUU-50X70X12	50	70	12	13 +0.300 0.000	50 -0.025 -0.064	70 0.000 -0.200	50 0.000 -0.100	70 +0.074 0.000	9.35
MUU-50X75X12	50	75	12	13 +0.300 0.000	50 -0.025 -0.064	75 0.000 -0.200	50 0.000 -0.100	75 +0.074 0.000	7.41
MUU-52X62X12	52	62	12	13 +0.300 0.000	52 -0.030 -0.076	62 0.000 -0.200	52 0.000 -0.120	62 +0.074 0.000	7.49
MUU-53X63X5	53	63	5	5.7 +0.300 0.000	53 -0.030 -0.076	63 0.000 -0.200	53 0.000 -0.120	63 +0.074 0.000	11.67


**STYLE MUU SYMMETRICAL U-SEALS**

U-SEALS

Part Number	A Nom. I.D.	B Nom. O.D.	C Nom. Ht.	D Groove Width	E Rod Diameter	F Housing Diameter	G Groove Diameter	H Bore Diameter	List Price
MUU-53X63X6	53	63	6	7 +0.300 0.000	53 -0.030 -0.076	63 0.000 -0.200	53 0.000 -0.120	63 +0.074 0.000	\$ 15.85
MUU-53X63X6.5	53	63	6.5	7.5 +0.300 0.000	53 -0.030 -0.076	63 0.000 -0.200	53 0.000 -0.120	63 +0.074 0.000	7.86
MUU-55X63X5	55	63	5	5.7 +0.300 0.000	55 -0.030 -0.076	63 0.000 -0.200	55 0.000 -0.120	63 +0.074 0.000	12.38
MUU-55X65X5	55	65	5	5.7 +0.300 0.000	55 -0.030 -0.076	65 0.000 -0.200	55 0.000 -0.120	65 +0.074 0.000	3.49
MUU-55X65X6	55	65	6	7 +0.300 0.000	55 -0.030 -0.076	65 0.000 -0.200	55 0.000 -0.120	65 +0.074 0.000	15.85
MUU-55X65X10	55	65	10	11 +0.300 0.000	55 -0.030 -0.076	65 0.000 -0.200	55 0.000 -0.120	65 +0.074 0.000	6.92
MUU-55X65X12	55	65	12	13 +0.300 0.000	55 -0.030 -0.076	65 0.000 -0.200	55 0.000 -0.120	65 +0.074 0.000	6.92
MUU-55X70X10	55	70	10	11 +0.300 0.000	55 -0.030 -0.076	70 0.000 -0.200	55 0.000 -0.120	70 +0.074 0.000	4.57
MUU-55X70X12	55	70	12	13 +0.300 0.000	55 -0.030 -0.076	70 0.000 -0.200	55 0.000 -0.120	70 +0.074 0.000	9.35
MUU-55X75X10	55	75	10	11 +0.300 0.000	55 -0.030 -0.076	75 0.000 -0.200	55 0.000 -0.120	75 +0.074 0.000	5.89
MUU-55X75X12	55	75	12	13 +0.300 0.000	55 -0.030 -0.076	75 0.000 -0.200	55 0.000 -0.120	75 +0.074 0.000	9.10
MUU-55X75X18	55	75	18	19 +0.300 0.000	55 -0.030 -0.076	75 0.000 -0.200	55 0.000 -0.120	75 +0.074 0.000	9.29
MUU-56X66X6	56	66	6	7 +0.300 0.000	56 -0.030 -0.076	66 0.000 -0.200	56 0.000 -0.120	66 +0.074 0.000	16.25
MUU-56X71X11	56	71	11	12 +0.300 0.000	56 -0.030 -0.076	71 0.000 -0.200	56 0.000 -0.120	71 +0.074 0.000	9.07
MUU-58X68X6	58	68	6	7 +0.300 0.000	58 -0.030 -0.076	68 0.000 -0.200	58 0.000 -0.120	68 +0.074 0.000	11.00
MUU-60X68X8	60	68	8	9 +0.300 0.000	60 -0.030 -0.076	68 0.000 -0.200	60 0.000 -0.120	68 +0.074 0.000	6.97
MUU-60X68X10	60	68	10	11 +0.300 0.000	60 -0.030 -0.076	68 0.000 -0.200	60 0.000 -0.120	68 +0.074 0.000	8.30
MUU-60X70X5	60	70	5	5.7 +0.300 0.000	60 -0.030 -0.076	70 0.000 -0.200	60 0.000 -0.120	70 +0.074 0.000	3.65
MUU-60X70X6	60	70	6	7 +0.300 0.000	60 -0.030 -0.076	70 0.000 -0.200	60 0.000 -0.120	70 +0.074 0.000	11.00
MUU-60X70X7.5	60	70	7.5	8.5 +0.300 0.000	60 -0.030 -0.076	70 0.000 -0.200	60 0.000 -0.120	70 +0.074 0.000	6.87
MUU-60X70X8	60	70	8	9 +0.300 0.000	60 -0.030 -0.076	70 0.000 -0.200	60 0.000 -0.120	70 +0.074 0.000	9.10
MUU-60X70X10	60	70	10	11 +0.300 0.000	60 -0.030 -0.076	70 0.000 -0.200	60 0.000 -0.120	70 +0.074 0.000	9.10
MUU-60X70X12	60	70	12	13 +0.300 0.000	60 -0.030 -0.076	70 0.000 -0.200	60 0.000 -0.120	70 +0.074 0.000	9.10
MUU-60X75X10	60	75	10	11 +0.300 0.000	60 -0.030 -0.076	75 0.000 -0.200	60 0.000 -0.120	75 +0.074 0.000	8.08
MUU-60X75X12	60	75	12	13 +0.300 0.000	60 -0.030 -0.076	75 0.000 -0.200	60 0.000 -0.120	75 +0.074 0.000	8.08

# STYLE MUU SYMMETRICAL U-SEALS



U-SEALS

Part Number	A Nom. I.D.	B Nom. O.D.	C Nom. Ht.	D Groove Width	E Rod Diameter	F Housing Diameter	G Groove Diameter	H Bore Diameter	List Price
MUU-60X80X10	60	80	10	11 +0.300 0.000	60 -0.030 -0.076	80 0.000 -0.200	60 0.000 -0.120	80 +0.074 0.000	\$ 9.23
MUU-60X80X12	60	80	12	13 +0.300 0.000	60 -0.030 -0.076	80 0.000 -0.200	60 0.000 -0.120	80 +0.074 0.000	9.23
MUU-60X80X18	60	80	18	19 +0.300 0.000	60 -0.030 -0.076	80 0.000 -0.200	60 0.000 -0.120	80 +0.074 0.000	10.38
MUU-63X73X6	63	73	6	7 +0.300 0.000	63 -0.030 -0.076	73 0.000 -0.200	63 0.000 -0.120	73 +0.074 0.000	11.00
MUU-63X73X7.5	63	73	7.5	8.5 +0.300 0.000	63 -0.030 -0.076	73 0.000 -0.200	63 0.000 -0.120	73 +0.074 0.000	5.73
MUU-63X75X10	63	75	10	11 +0.300 0.000	63 -0.030 -0.076	75 0.000 -0.200	63 0.000 -0.120	75 +0.074 0.000	8.43
MUU-63X78X10	63	78	10	11 +0.300 0.000	63 -0.030 -0.076	78 0.000 -0.200	63 0.000 -0.120	78 +0.074 0.000	9.46
MUU-63X78X11	63	78	11	12 +0.300 0.000	63 -0.030 -0.076	78 0.000 -0.200	63 0.000 -0.120	78 +0.074 0.000	17.14
MUU-63X80X9	63	80	9	10 +0.300 0.000	63 -0.030 -0.076	80 0.000 -0.200	63 0.000 -0.120	80 +0.074 0.000	6.32
MUU-63X80X10	63	80	10	11 +0.300 0.000	63 -0.030 -0.076	80 0.000 -0.200	63 0.000 -0.120	80 +0.074 0.000	9.52
MUU-65X75X6	65	75	6	7 +0.300 0.000	65 -0.030 -0.076	75 0.000 -0.200	65 0.000 -0.120	75 +0.074 0.000	17.52
MUU-65X80X7.5	65	80	7.5	8.5 +0.300 0.000	65 -0.030 -0.076	80 0.000 -0.200	65 0.000 -0.120	80 +0.074 0.000	6.32
MUU-65X80X11	65	80	11	12 +0.300 0.000	65 -0.030 -0.076	80 0.000 -0.200	65 0.000 -0.120	80 +0.074 0.000	9.23
MUU-65X80X12	65	80	12	13 +0.300 0.000	65 -0.030 -0.076	80 0.000 -0.200	65 0.000 -0.120	80 +0.074 0.000	9.23
MUU-65X85X10	65	85	10	11 +0.300 0.000	65 -0.030 -0.076	85 0.000 -0.200	65 0.000 -0.120	85 +0.087 0.000	9.23
MUU-65X85X12	65	85	12	13 +0.300 0.000	65 -0.030 -0.076	85 0.000 -0.200	65 0.000 -0.120	85 +0.087 0.000	9.23
MUU-65X90X18.5	65	90	18.5	19.5 +0.300 0.000	65 -0.030 -0.076	90 0.000 -0.200	65 0.000 -0.120	90 +0.087 0.000	9.29
MUU-66X80X10	66	80	10	11 +0.300 0.000	66 -0.030 -0.076	80 0.000 -0.200	66 0.000 -0.120	80 +0.074 0.000	8.77
MUU-66X80X13	66	80	13	14 +0.300 0.000	66 -0.030 -0.076	80 0.000 -0.200	66 0.000 -0.120	80 +0.074 0.000	8.77
MUU-67X77X6	67	77	6	7 +0.300 0.000	67 -0.030 -0.076	77 0.000 -0.200	67 0.000 -0.120	77 +0.074 0.000	17.52
MUU-70X80X5	70	80	5	5.7 +0.300 0.000	70 -0.030 -0.076	80 0.000 -0.200	70 0.000 -0.120	80 +0.074 0.000	8.43
MUU-70X80X6	70	80	6	7 +0.300 0.000	70 -0.030 -0.076	80 0.000 -0.200	70 0.000 -0.120	80 +0.074 0.000	18.33
MUU-70X80X8	70	80	8	9 +0.300 0.000	70 -0.030 -0.076	80 0.000 -0.200	70 0.000 -0.120	80 +0.074 0.000	8.08
MUU-70X80X10	70	80	10	11 +0.300 0.000	70 -0.030 -0.076	80 0.000 -0.200	70 0.000 -0.120	80 +0.074 0.000	8.43
MUU-70X80X12	70	80	12	13 +0.300 0.000	70 -0.030 -0.076	80 0.000 -0.200	70 0.000 -0.120	80 +0.074 0.000	8.43



# STYLE MUU SYMMETRICAL U-SEALS



U-SEALS

Part Number	A Nom. I.D.	B Nom. O.D.	C Nom. Ht.	D Groove Width	E Rod Diameter	F Housing Diameter	G Groove Diameter	H Bore Diameter	List Price
MUU-80X95X9	80	95	9	10 +0.300 0.000	80 -0.030 -0.076	95 0.000 -0.200	80 0.000 -0.120	95 +0.087 0.000	\$ 5.23
MUU-80X95X10	80	95	10	11 +0.300 0.000	80 -0.030 -0.076	95 0.000 -0.200	80 0.000 -0.120	95 +0.087 0.000	6.41
MUU-80X95X12	80	95	12	13 +0.300 0.000	80 -0.030 -0.076	95 0.000 -0.200	80 0.000 -0.120	95 +0.087 0.000	9.10
MUU-80X100X10	80	100	10	11 +0.300 0.000	80 -0.030 -0.076	100 0.000 -0.200	80 0.000 -0.120	100 +0.087 0.000	9.46
MUU-80X100X12	80	100	12	13 +0.300 0.000	80 -0.030 -0.076	100 0.000 -0.200	80 0.000 -0.120	100 +0.087 0.000	9.46
MUU-80X100X13.5	80	100	13.5	14.5 +0.300 0.000	80 -0.030 -0.076	100 0.000 -0.200	80 0.000 -0.120	100 +0.087 0.000	11.06
MUU-80X100X18	80	100	18	19 +0.300 0.000	80 -0.030 -0.076	100 0.000 -0.200	80 0.000 -0.120	100 +0.087 0.000	8.84
MUU-84X104X12	84	104	12	13 +0.300 0.000	84 -0.036 -0.090	104 0.000 -0.200	84 0.000 -0.140	104 +0.087 0.000	26.07
MUU-85X95X8.5	85	95	8.5	9.5 +0.300 0.000	85 -0.036 -0.090	95 0.000 -0.200	85 0.000 -0.140	95 +0.087 0.000	6.71
MUU-85X95X12	85	95	12	13 +0.300 0.000	85 -0.036 -0.090	95 0.000 -0.200	85 0.000 -0.140	95 +0.087 0.000	9.58
MUU-85X100X7.5	85	100	7.5	8.5 +0.300 0.000	85 -0.036 -0.090	100 0.000 -0.200	85 0.000 -0.140	100 +0.087 0.000	9.63
MUU-85X100X9	85	100	9	10 +0.300 0.000	85 -0.036 -0.090	100 0.000 -0.200	85 0.000 -0.140	100 +0.087 0.000	28.51
MUU-85X100X11	85	100	11	12 +0.300 0.000	85 -0.036 -0.090	100 0.000 -0.200	85 0.000 -0.140	100 +0.087 0.000	10.04
MUU-85X100X12	85	100	12	13 +0.300 0.000	85 -0.036 -0.090	100 0.000 -0.200	85 0.000 -0.140	100 +0.087 0.000	11.67
MUU-85X105X10	85	105	10	11 +0.300 0.000	85 -0.036 -0.090	105 0.000 -0.200	85 0.000 -0.140	105 +0.087 0.000	9.50
MUU-85X105X12	85	105	12	13 +0.300 0.000	85 -0.036 -0.090	105 0.000 -0.200	85 0.000 -0.140	105 +0.087 0.000	10.14
MUU-90X100X7	90	100	7	8 +0.300 0.000	90 -0.036 -0.090	100 0.000 -0.200	90 0.000 -0.140	100 +0.087 0.000	9.10
MUU-90X100X8	90	100	8	9 +0.300 0.000	90 -0.036 -0.090	100 0.000 -0.200	90 0.000 -0.140	100 +0.087 0.000	9.10
MUU-90X100X12	90	100	12	13 +0.300 0.000	90 -0.036 -0.090	100 0.000 -0.200	90 0.000 -0.140	100 +0.087 0.000	27.41
MUU-90X105X9	90	105	9	10 +0.300 0.000	90 -0.036 -0.090	105 0.000 -0.200	90 0.000 -0.140	105 +0.087 0.000	30.99
MUU-90X105X12	90	105	12	13 +0.300 0.000	90 -0.036 -0.090	105 0.000 -0.200	90 0.000 -0.140	105 +0.087 0.000	12.69
MUU-90X110X10	90	110	10	11 +0.300 0.000	90 -0.036 -0.090	110 0.000 -0.200	90 0.000 -0.140	110 +0.087 0.000	6.22
MUU-90X110X12	90	110	12	13 +0.300 0.000	90 -0.036 -0.090	110 0.000 -0.200	90 0.000 -0.140	110 +0.087 0.000	10.60
MUU-90X110X13	90	110	13	14 +0.300 0.000	90 -0.036 -0.090	110 0.000 -0.200	90 0.000 -0.140	110 +0.087 0.000	6.82
MUU-90X115X15	90	115	15	16 +0.300 0.000	90 -0.036 -0.090	115 0.000 -0.200	90 0.000 -0.140	115 +0.087 0.000	9.17


**STYLE MUU SYMMETRICAL U-SEALS**

U-SEALS

Part Number	A Nom. I.D.	B Nom. O.D.	C Nom. Ht.	D Groove Width	E Rod Diameter	F Housing Diameter	G Groove Diameter	H Bore Diameter	List Price
MUU-95X110X9	95	110	9	10 +0.300 0.000	95 -0.036 -0.090	110 0.000 -0.200	95 0.000 -0.140	110 +0.087 0.000	\$ 29.49
MUU-95X110X10	95	110	10	11 +0.300 0.000	95 -0.036 -0.090	110 0.000 -0.200	95 0.000 -0.140	110 +0.087 0.000	7.29
MUU-95X110X12	95	110	12	13 +0.300 0.000	95 -0.036 -0.090	110 0.000 -0.200	95 0.000 -0.140	110 +0.087 0.000	7.03
MUU-95X115X12	95	115	12	13 +0.300 0.000	95 -0.036 -0.090	115 0.000 -0.200	95 0.000 -0.140	115 +0.087 0.000	12.00
MUU-98X112X9	98	112	9	10 +0.300 0.000	98 -0.036 -0.090	112 0.000 -0.200	98 0.000 -0.140	112 +0.087 0.000	30.03
MUU-100X110X5	100	110	5	5.7 +0.300 0.000	100 -0.036 -0.090	110 0.000 -0.200	100 0.000 -0.140	110 +0.087 0.000	6.22
MUU-100X110X8	100	110	8	9 +0.300 0.000	100 -0.036 -0.090	110 0.000 -0.200	100 0.000 -0.140	110 +0.087 0.000	7.41
MUU-100X115X9	100	115	9	10 +0.300 0.000	100 -0.036 -0.090	115 0.000 -0.200	100 0.000 -0.140	115 +0.087 0.000	30.03
MUU-100X115X12	100	115	12	13 +0.300 0.000	100 -0.036 -0.090	115 0.000 -0.200	100 0.000 -0.140	115 +0.087 0.000	10.97
MUU-100X120X12	100	120	12	13 +0.300 0.000	100 -0.036 -0.090	120 0.000 -0.200	100 0.000 -0.140	120 +0.087 0.000	31.08
MUU-100X120X13.5	100	120	13.5	14.5 +0.300 0.000	100 -0.036 -0.090	120 0.000 -0.200	100 0.000 -0.140	120 +0.087 0.000	8.58
MUU-100X120X15	100	120	15	16 +0.300 0.000	100 -0.036 -0.090	120 0.000 -0.200	100 0.000 -0.140	120 +0.087 0.000	8.26
MUU-100X125X15	100	125	15	16 +0.300 0.000	100 -0.036 -0.090	125 0.000 -0.200	100 0.000 -0.140	125 +0.100 0.000	13.04
MUU-105X120X8	105	120	8	9 +0.300 0.000	105 -0.036 -0.090	120 0.000 -0.200	105 0.000 -0.140	120 +0.087 0.000	9.94
MUU-105X120X15	105	120	15	16 +0.300 0.000	105 -0.036 -0.090	120 0.000 -0.200	105 0.000 -0.140	120 +0.087 0.000	12.23
MUU-105X125X11.4	105	125	11.4	12.5 +0.300 0.000	105 -0.036 -0.090	125 0.000 -0.200	105 0.000 -0.140	125 +0.100 0.000	21.96
MUU-105X125X12	105	125	12	13 +0.300 0.000	105 -0.036 -0.090	125 0.000 -0.200	105 0.000 -0.140	125 +0.100 0.000	9.38
MUU-105X125X15	105	125	15	16 +0.300 0.000	105 -0.036 -0.090	125 0.000 -0.200	105 0.000 -0.140	125 +0.100 0.000	12.12
MUU-105X125X16	105	125	16	17 +0.300 0.000	105 -0.036 -0.090	125 0.000 -0.200	105 0.000 -0.140	125 +0.100 0.000	11.23
MUU-105X130X12	105	130	12	13 +0.300 0.000	105 -0.036 -0.090	130 0.000 -0.200	105 0.000 -0.140	130 +0.100 0.000	10.95
MUU-106X120X8.5	106	120	8.5	9.5 +0.300 0.000	106 -0.036 -0.090	120 0.000 -0.200	106 0.000 -0.140	120 +0.087 0.000	8.97
MUU-110X125X12	110	125	12	13 +0.300 0.000	110 -0.036 -0.090	125 0.000 -0.200	110 0.000 -0.140	125 +0.100 0.000	12.69
MUU-110X125X15	110	125	15	16 +0.300 0.000	110 -0.036 -0.090	125 0.000 -0.200	110 0.000 -0.140	125 +0.100 0.000	32.27
MUU-110X130X10	110	130	10	11 +0.300 0.000	110 -0.036 -0.090	130 0.000 -0.200	110 0.000 -0.140	130 +0.100 0.000	7.46
MUU-110X130X15	110	130	15	16 +0.300 0.000	110 -0.036 -0.090	130 0.000 -0.200	110 0.000 -0.140	130 +0.100 0.000	28.87

# STYLE MUU SYMMETRICAL U-SEALS



U-SEALS

Part Number	A Nom. I.D.	B Nom. O.D.	C Nom. Ht.	D Groove Width	E Rod Diameter	F Housing Diameter	G Groove Diameter	H Bore Diameter	List Price
MUU-112X125X9	112	125	9	10 +0.300 0.000	112 -0.036 -0.090	125 0.000 -0.200	112 0.000 -0.140	125 +0.100 0.000	\$ 31.08
MUU-115X125X12	115	125	12	13 +0.300 0.000	115 -0.036 -0.090	125 0.000 -0.200	115 0.000 -0.140	125 +0.100 0.000	8.76
MUU-115X130X11	115	130	11	12 +0.300 0.000	115 -0.036 -0.090	130 0.000 -0.200	115 0.000 -0.140	130 +0.100 0.000	11.03
MUU-115X135X15	115	135	15	16 +0.300 0.000	115 -0.036 -0.090	135 0.000 -0.200	115 0.000 -0.140	135 +0.100 0.000	41.21
MUU-115X140X22	115	140	22	23 +0.300 0.000	115 -0.036 -0.090	140 0.000 -0.200	115 0.000 -0.140	140 +0.100 0.000	13.74
MUU-120X130X14	120	130	14	15 +0.300 0.000	120 -0.036 -0.090	130 0.000 -0.200	120 0.000 -0.140	130 +0.100 0.000	11.23
MUU-120X140X10	120	140	10	11 +0.300 0.000	120 -0.036 -0.090	140 0.000 -0.200	120 0.000 -0.140	140 +0.100 0.000	8.72
MUU-120X140X12	120	140	12	13 +0.300 0.000	120 -0.036 -0.090	140 0.000 -0.200	120 0.000 -0.140	140 +0.100 0.000	15.92
MUU-120X140X15	120	140	15	16 +0.300 0.000	120 -0.036 -0.090	140 0.000 -0.200	120 0.000 -0.140	140 +0.100 0.000	13.97
MUU-125X140X11	125	140	11	12 +0.300 0.000	125 -0.043 -0.106	140 0.000 -0.200	125 0.000 -0.160	140 +0.100 0.000	13.97
MUU-125X140X12	125	140	12	13 +0.300 0.000	125 -0.043 -0.106	140 0.000 -0.200	125 0.000 -0.160	140 +0.100 0.000	11.55
MUU-125X145X15	125	145	15	16 +0.300 0.000	125 -0.043 -0.106	145 0.000 -0.200	125 0.000 -0.160	145 +0.100 0.000	32.38
MUU-125X150X12	125	150	12	13 +0.300 0.000	125 -0.043 -0.106	150 0.000 -0.200	125 0.000 -0.160	150 +0.100 0.000	16.00
MUU-125X150X18	125	150	18	19 +0.300 0.000	125 -0.043 -0.106	150 0.000 -0.200	125 0.000 -0.160	150 +0.100 0.000	10.70
MUU-125X155X15	125	155	15	16 +0.300 0.000	125 -0.043 -0.106	155 0.000 -0.200	125 0.000 -0.160	155 +0.100 0.000	15.42
MUU-135X150X15	135	150	15	16 +0.300 0.000	135 -0.043 -0.106	150 0.000 -0.200	135 0.000 -0.160	150 +0.100 0.000	10.52
MUU-135X155X15	135	155	15	16 +0.300 0.000	135 -0.043 -0.106	155 0.000 -0.200	135 0.000 -0.160	155 +0.100 0.000	14.71
MUU-136X150X9	136	150	9	10 +0.300 0.000	136 -0.043 -0.106	150 0.000 -0.200	136 0.000 -0.160	150 +0.100 0.000	35.69
MUU-140X155X8.9	140	155	8.9	10 +0.300 0.000	140 -0.043 -0.106	155 0.000 -0.200	140 0.000 -0.160	155 +0.100 0.000	31.53
MUU-140X155X9	140	155	9	10 +0.300 0.000	140 -0.043 -0.106	155 0.000 -0.200	140 0.000 -0.160	155 +0.100 0.000	13.27
MUU-140X160X15	140	160	15	16 +0.300 0.000	140 -0.043 -0.106	160 0.000 -0.200	140 0.000 -0.160	160 +0.100 0.000	33.74
MUU-140X165X15	140	165	15	16 +0.300 0.000	140 -0.043 -0.106	165 0.000 -0.200	140 0.000 -0.160	165 +0.100 0.000	18.12
MUU-145X160X9	145	160	9	10 +0.300 0.000	145 -0.043 -0.106	160 0.000 -0.200	145 0.000 -0.160	160 +0.100 0.000	40.67
MUU-145X165X15	145	165	15	16 +0.300 0.000	145 -0.043 -0.106	165 0.000 -0.200	145 0.000 -0.160	165 +0.100 0.000	40.25
MUU-150X165X8.9	150	165	8.9	10 +0.300 0.000	150 -0.043 -0.106	165 0.000 -0.200	150 0.000 -0.160	165 +0.100 0.000	38.50


**STYLE MUU SYMMETRICAL U-SEALS**

U-SEALS

Part Number	A Nom. I.D.	B Nom. O.D.	C Nom. Ht.	D Groove Width	E Rod Diameter	F Housing Diameter	G Groove Diameter	H Bore Diameter	List Price
MUU-150X170X15	150	170	15	16 +0.300 0.000	150 -0.043 -0.106	170 0.000 -0.200	150 0.000 -0.160	170 +0.100 0.000	\$ 40.25
MUU-150X180X13.5	150	180	13.5	14.5 +0.300 0.000	150 -0.043 -0.106	180 0.000 -0.200	150 0.000 -0.160	180 +0.100 0.000	25.80
MUU-155X170X10	155	170	10	11 +0.300 0.000	155 -0.043 -0.106	170 0.000 -0.200	155 0.000 -0.160	170 +0.100 0.000	13.74
MUU-155X180X15	155	180	15	16 +0.300 0.000	155 -0.043 -0.106	180 0.000 -0.200	155 0.000 -0.160	180 +0.100 0.000	44.88
MUU-160X175X9	160	175	9	10 +0.300 0.000	160 -0.043 -0.106	175 0.000 -0.200	160 0.000 -0.160	175 +0.100 0.000	48.13
MUU-160X180X10	160	180	10	11 +0.300 0.000	160 -0.043 -0.106	180 0.000 -0.200	160 0.000 -0.160	180 +0.100 0.000	47.79
MUU-160X180X14.5-E	160	180	14.5	16 +0.300 0.000	160 -0.043 -0.106	180 0.000 -0.200	160 0.000 -0.160	180 +0.100 0.000	62.55
MUU-160X185X15	160	185	15	16 +0.300 0.000	160 -0.043 -0.106	185 0.000 -0.200	160 0.000 -0.160	185 +0.115 0.000	49.34
MUU-160X190X22	160	190	22	23 +0.300 0.000	160 -0.043 -0.106	190 0.000 -0.200	160 0.000 -0.160	190 +0.115 0.000	20.58
MUU-165X180X9	165	180	9	10 +0.300 0.000	165 -0.043 -0.106	180 0.000 -0.200	165 0.000 -0.160	180 +0.100 0.000	50.31
MUU-165X180X9.5	165	180	9.5	10.5 +0.300 0.000	165 -0.043 -0.106	180 0.000 -0.200	165 0.000 -0.160	180 +0.100 0.000	19.08
MUU-165X190X15	165	190	15	16 +0.300 0.000	165 -0.043 -0.106	190 0.000 -0.200	165 0.000 -0.160	190 +0.115 0.000	52.99
MUU-165X195X7.6	165	195	7.6	8.5 +0.300 0.000	165 -0.043 -0.106	195 0.000 -0.200	165 0.000 -0.160	195 +0.115 0.000	36.21
MUU-170X190X15	170	190	15	16 +0.300 0.000	170 -0.043 -0.106	190 0.000 -0.200	170 0.000 -0.160	190 +0.115 0.000	21.41
MUU-170X195X15	170	195	15	16 +0.300 0.000	170 -0.043 -0.106	195 0.000 -0.200	170 0.000 -0.160	195 +0.115 0.000	55.64
MUU-170X200X18	170	200	18	19 +0.300 0.000	170 -0.043 -0.106	200 0.000 -0.200	170 0.000 -0.160	200 +0.115 0.000	30.90
MUU-170X200X22	170	200	22	23 +0.300 0.000	170 -0.043 -0.106	200 0.000 -0.200	170 0.000 -0.160	200 +0.115 0.000	23.28
MUU-175X200X15	175	200	15	16 +0.300 0.000	175 -0.043 -0.106	200 0.000 -0.200	175 0.000 -0.160	200 +0.115 0.000	57.44
MUU-180X200X18	180	200	18	19 +0.300 0.000	180 -0.043 -0.106	200 0.000 -0.200	180 0.000 -0.160	200 +0.115 0.000	21.34
MUU-180X205X15	180	205	15	16 +0.300 0.000	180 -0.043 -0.106	205 0.000 -0.200	180 0.000 -0.160	205 +0.115 0.000	60.70
MUU-180X210X15	180	210	15	16 +0.300 0.000	180 -0.043 -0.106	210 0.000 -0.200	180 0.000 -0.160	210 +0.115 0.000	39.58
MUU-180X210X22	180	210	22	23 +0.300 0.000	180 -0.043 -0.106	210 0.000 -0.200	180 0.000 -0.160	210 +0.115 0.000	23.28
MUU-180X220X20	180	220	20	21 +0.300 0.000	180 -0.043 -0.106	220 0.000 -0.200	180 0.000 -0.160	220 +0.115 0.000	42.96
MUU-190X210X12	190	210	12	13 +0.300 0.000	190 -0.050 -0.122	210 0.000 -0.200	190 0.000 -0.185	210 +0.115 0.000	63.01
MUU-190X210X15	190	210	15	16 +0.300 0.000	190 -0.050 -0.122	210 0.000 -0.200	190 0.000 -0.185	210 +0.115 0.000	24.89

# STYLE MUU SYMMETRICAL U-SEALS



U-SEALS

Part Number	A Nom. I.D.	B Nom. O.D.	C Nom. Ht.	D Groove Width	E Rod Diameter	F Housing Diameter	G Groove Diameter	H Bore Diameter	List Price
MUU-190X215X15	190	215	15	16 +0.300 0.000	190 -0.050 -0.122	215 0.000 -0.200	190 0.000 -0.185	215 +0.115 0.000	\$ 64.21
MUU-190X220X26	190	220	25	26 +0.300 0.000	190 -0.050 -0.122	220 0.000 -0.200	190 0.000 -0.185	220 +0.115 0.000	36.18
MUU-200X220X12	200	220	12	13 +0.300 0.000	200 -0.050 -0.122	220 0.000 -0.200	200 0.000 -0.185	220 +0.115 0.000	65.34
MUU-200X225X15	200	225	15	16 +0.300 0.000	200 -0.050 -0.122	225 0.000 -0.200	200 0.000 -0.185	225 +0.115 0.000	66.11
MUU-200X225X18	200	225	18	19 +0.300 0.000	200 -0.050 -0.122	225 0.000 -0.200	200 0.000 -0.185	225 +0.115 0.000	37.73
MUU-200X230X18	200	230	18	19 +0.300 0.000	200 -0.050 -0.122	230 0.000 -0.200	200 0.000 -0.185	230 +0.115 0.000	32.45
MUU-210X235X18	210	235	18	20 +0.300 0.000	210 -0.050 -0.122	235 0.000 -0.200	210 0.000 -0.185	235 +0.115 0.000	69.14
MUU-210X240X18	210	240	18	19 +0.300 0.000	210 -0.050 -0.122	240 0.000 -0.200	210 0.000 -0.185	240 +0.115 0.000	39.87
MUU-210X250X20	210	250	20	21 +0.300 0.000	210 -0.050 -0.122	250 0.000 -0.200	210 0.000 -0.185	250 +0.115 0.000	41.28
MUU-220X240X12	220	240	12	13 +0.300 0.000	220 -0.050 -0.122	240 0.000 -0.200	220 0.000 -0.185	240 +0.115 0.000	69.96
MUU-220X240X15	220	240	15	16 +0.300 0.000	220 -0.050 -0.122	240 0.000 -0.200	220 0.000 -0.185	240 +0.115 0.000	39.58
MUU-220X250X15	220	250	15	16 +0.300 0.000	220 -0.050 -0.122	250 0.000 -0.200	220 0.000 -0.185	250 +0.115 0.000	37.34
MUU-220X250X17	220	250	17	19.2 +0.300 0.000	220 -0.050 -0.122	250 0.000 -0.200	220 0.000 -0.185	250 +0.115 0.000	70.59
MUU-220X250X18	220	250	18	19 +0.300 0.000	220 -0.050 -0.122	250 0.000 -0.200	220 0.000 -0.185	250 +0.115 0.000	51.54
MUU-220X250X20	220	250	20	21 +0.300 0.000	220 -0.050 -0.122	250 0.000 -0.200	220 0.000 -0.185	250 +0.115 0.000	41.16
MUU-220X260X20	220	260	20	21 +0.300 0.000	220 -0.050 -0.122	260 0.000 -0.200	220 0.000 -0.185	260 +0.130 0.000	51.60
MUU-225X245X15	225	245	15	16 +0.300 0.000	225 -0.050 -0.122	245 0.000 -0.200	225 0.000 -0.185	245 +0.115 0.000	42.06
MUU-230X250X12	230	250	12	13 +0.300 0.000	230 -0.050 -0.122	250 0.000 -0.200	230 0.000 -0.185	250 +0.115 0.000	70.91
MUU-230X250X15	230	250	15	16 +0.300 0.000	230 -0.050 -0.122	250 0.000 -0.200	230 0.000 -0.185	250 +0.115 0.000	37.34
MUU-240X260X16	240	260	16	17 +0.300 0.000	240 -0.050 -0.122	260 0.000 -0.200	240 0.000 -0.185	260 +0.130 0.000	40.36
MUU-240X270X18	240	270	18	19 +0.300 0.000	240 -0.050 -0.122	270 0.000 -0.200	240 0.000 -0.185	270 +0.130 0.000	44.77
MUU-245X270X15	245	270	15	16 +0.300 0.000	245 -0.050 -0.122	270 0.000 -0.200	245 0.000 -0.185	270 +0.130 0.000	46.80
MUU-250X270X15	250	270	15	16 +0.300 0.000	250 -0.050 -0.122	270 0.000 -0.200	250 0.000 -0.185	270 +0.130 0.000	75.41
MUU-250X275X18	250	275	18	20 +0.300 0.000	250 -0.050 -0.122	275 0.000 -0.200	250 0.000 -0.185	275 +0.130 0.000	87.13
MUU-250X280X18	250	280	18	19 +0.300 0.000	250 -0.050 -0.122	280 0.000 -0.200	250 0.000 -0.185	280 +0.130 0.000	53.47



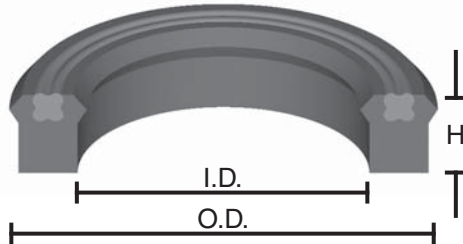
## STYLE MUU SYMMETRICAL U-SEALS

Part Number	A Nom. I.D.	B Nom. O.D.	C Nom. Ht.	D Groove Width	E Rod Diameter	F Housing Diameter	G Groove Diameter	H Bore Diameter	List Price
MUU-260X290X18	260	290	18	19 $+0.300$ $0.000$	260 $-0.056$ $-0.137$	290 $0.000$ $-0.200$	260 $0.000$ $-0.210$	290 $+0.130$ $0.000$	\$ 46.30
MUU-265X290X17	265	290	17	18 $+0.300$ $0.000$	265 $-0.056$ $-0.137$	290 $0.000$ $-0.200$	265 $0.000$ $-0.210$	290 $+0.130$ $0.000$	63.98
MUU-270X290X17	270	290	17	18 $+0.300$ $0.000$	270 $-0.056$ $-0.137$	290 $0.000$ $-0.200$	270 $0.000$ $-0.210$	290 $+0.130$ $0.000$	52.27
MUU-280X300X15	280	300	15	16 $+0.300$ $0.000$	280 $-0.056$ $-0.137$	300 $0.000$ $-0.200$	280 $0.000$ $-0.210$	300 $+0.130$ $0.000$	62.39
MUU-320X340X15	320	340	15	16 $+0.300$ $0.000$	320 $-0.062$ $-0.151$	340 $0.000$ $-0.200$	320 $0.000$ $-0.230$	340 $+0.140$ $0.000$	104.87

# STYLE MUUL LOADED SYMMETRICAL U-SEALS



Molded from tough polyurethane material, these seals offer high resistance to wear and abrasion. Energized with a four-lobed ring, they have greatly increased low pressure performance.



## SEAL INFORMATION

MATERIAL	URETHANE
TEMPERATURE RANGE	-40° TO +200° F
PRESSURE RANGE	0 TO 5,000 PSI
PART NUMBER	(Prefix) - (ID) X (OD) X (H)

Part Number	List Price	Part Number	List Price	Part Number	List Price	Part Number	List Price
MUUL-9X19X8	\$ 4.44	MUUL-25X33X5	\$ 7.07	MUUL-35X45X6	\$ 10.23	MUUL-45X60X10	\$ 14.59
MUUL-10X16X6	4.38	MUUL-25X33X8	8.31	MUUL-35X45X7.3	10.23	MUUL-45X65X12	16.17
MUUL-10X20X8	4.38	MUUL-25X35X8	8.50	MUUL-35X45X8	10.23	MUUL-50X60X6	11.40
MUUL-12X18X6	4.48	MUUL-25X35X10	8.50	MUUL-35X45X10	9.81	MUUL-50X60X7.3	13.32
MUUL-12X22X7.7	4.78	MUUL-25X40X10	8.50	MUUL-35X50X10	7.99	MUUL-50X60X10	10.84
MUUL-12.5X22.5X8	5.18	MUUL-28X35.5X5	8.34	MUUL-35X55X10	11.79	MUUL-50X63X10	11.39
MUUL-14X22X5	5.18	MUUL-28X38X7.3	8.50	MUUL-36X44X6	6.54	MUUL-50X65X9	15.02
MUUL-14X24X8	5.18	MUUL-28X38X8	8.50	MUUL-36X46X10	11.06	MUUL-50X65X10	16.13
MUUL-15X25X8	5.46	MUUL-28X40X10	8.50	MUUL-40X48X6	7.23	MUUL-50X65X11.4	17.69
MUUL-16X24X5	4.86	MUUL-28X43X10	8.50	MUUL-40X48X8	7.23	MUUL-50X70X12	16.96
MUUL-16X26X8	5.46	MUUL-30X38X6.3	9.00	MUUL-40X50X6	10.56	MUUL-53X63X6	11.76
MUUL-18X26X5	5.59	MUUL-30X38X8	9.00	MUUL-40X50X6.5	10.56	MUUL-55X65X6	12.76
MUUL-18X28X8	9.78	MUUL-30X40X6	9.61	MUUL-40X50X7.3	11.03	MUUL-55X65X10	16.47
MUUL-20X26X5	4.90	MUUL-30X40X7	9.61	MUUL-40X50X7.3HT	11.66	MUUL-55X65X12	18.33
MUUL-20X28X5	6.19	MUUL-30X40X7.3	9.61	MUUL-40X50X8	11.03	MUUL-55X70X9	15.98
MUUL-20X30X8	6.04	MUUL-30X40X10	9.06	MUUL-40X50X10	11.03	MUUL-55X70X12	14.40
MUUL-20X35X10	10.87	MUUL-30X42X9	9.86	MUUL-40X53X8	11.58	MUUL-55X75X12	19.22
MUUL-20X35X12	10.87	MUUL-30X42X10	9.86	MUUL-40X55X9	11.58	MUUL-56X66X6	12.21
MUUL-20X40X12	13.07	MUUL-30X45X10	7.24	MUUL-40X55X10	11.22	MUUL-56X66X10	12.38
MUUL-22X30X5	6.70	MUUL-30X50X10	7.97	MUUL-40X60X12	12.72	MUUL-56X71X11.4	14.68
MUUL-22X30X5.7	6.70	MUUL-31.5X41.5X6	9.61	MUUL-42X50X6	10.65	MUUL-60X70X6	12.40
MUUL-22X30X6	6.70	MUUL-32X40X5.7	7.71	MUUL-42X55X7	11.58	MUUL-60X70X8	12.40
MUUL-22X30X7	6.74	MUUL-32X40X8	7.71	MUUL-45X53X8	9.24	MUUL-60X70X10	11.90
MUUL-22X32X8	6.74	MUUL-32X42X7.3	9.86	MUUL-45X53X8HT	11.11	MUUL-60X70X12	12.40
MUUL-22X35X8	6.79	MUUL-32X42X10	6.86	MUUL-45X55X6	11.22	MUUL-60X71X7	11.03
MUUL-22X35X10	6.88	MUUL-32X47X10	7.88	MUUL-45X55X7.3	11.22	MUUL-60X73X10	14.42
MUUL-22X40X12	8.13	MUUL-32X48X10	11.54	MUUL-45X55X10	14.33	MUUL-60X75X9	16.58
MUUL-22.4X30X5	6.87	MUUL-35X43X6.4	7.71	MUUL-45X56X7	11.33	MUUL-60X75X11	16.58
MUUL-22.4X32.4X8	8.50	MUUL-35X43X8	7.71	MUUL-45X60X9	14.33	MUUL-60X80X12	17.27



# STYLE MUUL LOADED SYMMETRICAL U-SEALS

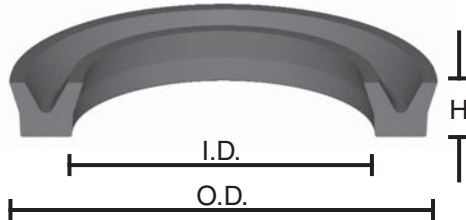
U-SEALS

Part Number	List Price	Part Number	List Price	Part Number	List Price	Part Number	List Price
MUUL-63X75X8.7	\$ 15.07	MUUL-80X90X8	\$ 16.99	MUUL-110X125X9	\$ 32.35	MUUL-140X160X15	\$ 38.29
MUUL-63X78X10.6HT	19.80	MUUL-80X90X10	16.99	MUUL-110X125X10	28.27	MUUL-140X165X18.2	46.57
MUUL-63X78X11.4	16.07	MUUL-80X93X10	18.84	MUUL-110X125X12	28.27	MUUL-145X160X9	33.09
MUUL-63X83X15	18.60	MUUL-80X95X9	19.89	MUUL-110X130X10	38.05	MUUL-150X165X9	32.53
MUUL-65X75X6	13.91	MUUL-80X95X10	19.89	MUUL-110X130X12	32.56	MUUL-150X170X15	40.51
MUUL-65X75X12	14.11	MUUL-80X95X11	19.89	MUUL-110X130X14.5	31.92	MUUL-150X170X16	43.31
MUUL-65X78X10	15.65	MUUL-80X95X11.4	19.89	MUUL-110X130X15	33.01	MUUL-150X180X18	57.59
MUUL-65X80X9	18.37	MUUL-80X100X12	24.42	MUUL-112X125X9	28.71	MUUL-155X180X16	48.19
MUUL-65X80X11.4	18.37	MUUL-85X100X9	23.69	MUUL-115X130X9	29.58	MUUL-160X175X9	34.88
MUUL-65X80X12	16.35	MUUL-85X100X10	21.07	MUUL-115X135X12	33.74	MUUL-160X180X15	41.32
MUUL-65X85X12	19.77	MUUL-85X100X12.5	29.02	MUUL-120X140X10	40.95	MUUL-160X185X16	41.32
MUUL-70X80X6	15.17	MUUL-85X105X12	29.02	MUUL-120X140X12	42.18	MUUL-165X180X9.5	36.06
MUUL-70X80X10	15.19	MUUL-90X100X6	25.75	MUUL-120X140X14.5	34.20	MUUL-170X190X15	42.14
MUUL-70X80X12	19.50	MUUL-90X105X9	26.23	MUUL-120X140X15	35.34	MUUL-175X200X15	54.41
MUUL-70X83X10	16.84	MUUL-90X105X10	22.27	MUUL-125X140X9	33.69	MUUL-180X200X12.5	48.66
MUUL-70X85X9	18.44	MUUL-90X110X12	37.19	MUUL-125X145X15	37.12	MUUL-180X205X16	56.15
MUUL-70X85X10	20.36	MUUL-95X110X10	24.53	MUUL-125X150X18	44.98	MUUL-190X210X12	50.83
MUUL-70X85X11.4	14.45	MUUL-95X115X12	37.19	MUUL-130X150X12	33.98	MUUL-190X215X16	59.29
MUUL-70X90X12	23.96	MUUL-100X115X9	29.41	MUUL-130X150X13	33.98	MUUL-200X220X12.5	54.09
MUUL-71X80X6	12.92	MUUL-100X115X10	25.70	MUUL-130X150X15	33.98	MUUL-200X225X16	62.38
MUUL-75X85X6	15.75	MUUL-100X115X12	25.70	MUUL-130X150X16	37.12	MUUL-200X225X18	62.38
MUUL-75X85X12	20.65	MUUL-100X120X12	31.16	MUUL-135X150X9	27.92	MUUL-205X235X18	111.36
MUUL-75X88X10	15.92	MUUL-105X120X9	31.37	MUUL-135X155X15	35.24	MUUL-240X265X18	81.21
MUUL-75X90X9	21.59	MUUL-105X120X10	26.67	MUUL-136X150X9	28.07		
MUUL-75X95X12	25.23	MUUL-105X125X12	28.24	MUUL-140X155X9	30.99		
MUUL-80X90X6	16.62	MUUL-105X125X15	31.37	MUUL-140X160X12	46.51		

# STYLE MUSN SYMMETRICAL U-SEALS



Molded from 90A nitrile, this seal provides high sealability in a symmetrical design suitable for rods or pistons.



## SEAL INFORMATION

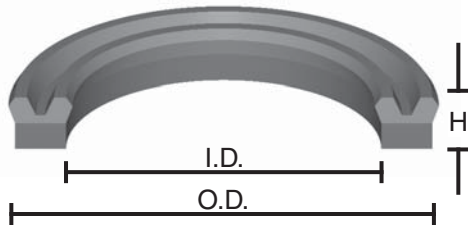
MATERIAL	90A NITRILE
TEMPERATURE RANGE	-13° TO +212° F
PRESSURE RANGE	0 TO 2,000 PSI
PART NUMBER	(Prefix) - (ID) X (OD) X (H)

Part Number	List Price	Part Number	List Price	Part Number	List Price	Part Number	List Price
MUSN-6.3X16.3X8	\$ 4.08	MUSN-35X45X6	\$ 3.23	MUSN-65X75X6	\$ 4.75	MUSN-106X126X15	\$ 40.04
MUSN-7.1X17.1X8	4.08	MUSN-35X50X10	10.40	MUSN-65X85X10	4.75	MUSN-110X130X15	42.90
MUSN-8X18X8	4.08	MUSN-35.5X45X6	3.23	MUSN-65X85X12	19.76	MUSN-110X135X12	9.28
MUSN-9X19X8	4.38	MUSN-35.5X50.5X10	11.71	MUSN-67X77X6	4.75	MUSN-112X125X9	9.57
MUSN-10X20X8	4.38	MUSN-36X46X6	20.82	MUSN-67X87X12	20.88	MUSN-112X132X15	45.23
MUSN-11.2X21.2X8	4.69	MUSN-40X50X6	3.38	MUSN-70X80X6	5.15	MUSN-115X130X9	39.40
MUSN-12.5X22.5X8	4.69	MUSN-40X53X9	12.21	MUSN-70X90X12	21.48	MUSN-118X138X15	51.04
MUSN-14X24X8	5.19	MUSN-40X55X5	7.18	MUSN-71X80X6	5.15	MUSN-120X140X10	9.78
MUSN-15X25X8	5.19	MUSN-40X55X10	12.89	MUSN-71X91X12	22.01	MUSN-120X140X15	52.18
MUSN-16X24X5	2.83	MUSN-40X60X12	13.55	MUSN-75X85X6	5.65	MUSN-125X140X9	11.79
MUSN-16X26X8	5.51	MUSN-45X55X6	3.78	MUSN-75X95X10	5.85	MUSN-125X145X15	55.64
MUSN-18X26X5	2.83	MUSN-45X56X7	3.78	MUSN-75X95X12	24.36	MUSN-125X150X15	13.95
MUSN-18X28X8	5.80	MUSN-45X60X10	13.18	MUSN-80X90X6	6.01	MUSN-130X150X15	66.70
MUSN-20X28X5	2.83	MUSN-48X63X10	13.33	MUSN-80X100X12	29.02	MUSN-136X150X9	13.56
MUSN-20X30X8	6.40	MUSN-50X60X6	4.00	MUSN-85X100X9	6.74	MUSN-140X160X15	75.98
MUSN-22X30X5	2.87	MUSN-50X65X10	13.93	MUSN-85X105X12	32.49	MUSN-145X160X9	14.98
MUSN-22.4X30X5	2.83	MUSN-53X63X6	4.22	MUSN-88X109X10	7.20	MUSN-150X165X9	15.55
MUSN-22.4X32.4X8	7.24	MUSN-53X73X12	14.48	MUSN-90X100X6	7.57	MUSN-150X170X15	88.13
MUSN-23.5X31.5X5	2.83	MUSN-55X65X6	4.22	MUSN-90X105X9	7.44	MUSN-160X175X9	17.91
MUSN-25X33X5	2.83	MUSN-55X75X12	15.07	MUSN-90X110X12	34.97	MUSN-165X180X9	18.84
MUSN-25X35X8	7.83	MUSN-56X66X6	4.22	MUSN-95X110X9	7.75	MUSN-180X200X12	21.27
MUSN-28X35.5X5	2.83	MUSN-60X70X6	4.55	MUSN-95X115X12	36.78	MUSN-200X220X12	25.13
MUSN-28X43X10	9.29	MUSN-60X71X7	4.55	MUSN-98X112X9	8.45	MUSN-204X224X12	27.05
MUSN-30X40X6	2.92	MUSN-60X80X12	17.41	MUSN-100X115X9	8.45	MUSN-230X250X12	30.53
MUSN-30X45X10	9.57	MUSN-63X73X6	4.75	MUSN-100X120X12	37.70		
MUSN-31.5X41.5X6	2.92	MUSN-63X83X12	18.56	MUSN-105X120X9	71.10		
MUSN-31.5X44.5X10	9.88	MUSN-64X80X12	46.75	MUSN-105X125X15	39.13		



## STYLE MUFN-U SYMMETRICAL U-SEALS

Incorporating a rubber U-cup shape and a rubberized fabric heel, this seal provides excellent sealability and high strength. The 'U' shape design decreases the radial interference for lower lip friction.



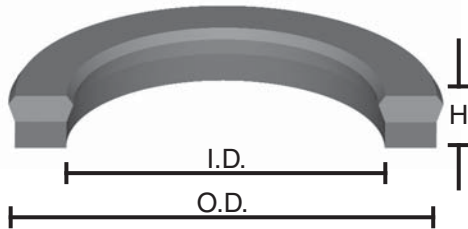
Part Number	List Price
MUFN-56X71X9.5U	\$ 9.64
MUFN-63X78X9.5U	10.65

### SEAL INFORMATION

MATERIAL	NITRILE / FABRIC BASE
TEMPERATURE RANGE	-22° TO +212° F
PRESSURE RANGE	0 TO 2,900 PSI
PART NUMBER	(Prefix) - (ID) X (OD) X (H)

# STYLE MUFN-P SYMMETRICAL SEALS

Incorporating a rubber seal lip and a rubberized fabric heel, this seal provides excellent sealability and high strength.



## SEAL INFORMATION

MATERIAL	NITRILE / FABRIC BASE
TEMPERATURE RANGE	-22° TO +212° F
PRESSURE RANGE	0 TO 2,900
PART NUMBER	(Prefix) - (ID) X (OD) X (H)

Part Number	List Price	Part Number	List Price	Part Number	List Price
MUFN-12X19X6P	\$ 7.48	MUFN-36X44X8P	\$ 6.79	MUFN-60X72X9.5P	\$ 10.41
MUFN-12X20X6.3P	5.67	MUFN-36X46X7.5P	6.79	MUFN-60X80X11.5P	9.80
MUFN-14X22X6P	6.36	MUFN-36X48X9P	18.09	MUFN-60X80X14P	10.33
MUFN-15X23X5.8P	5.67	MUFN-36X51X11P	6.90	MUFN-63X75X9P	10.33
MUFN-16X24X6P	4.43	MUFN-38X50X9P	7.94	MUFN-65X77X9P	10.65
MUFN-18X24X5P	6.23	MUFN-40X48X6P	5.89	MUFN-65X80X11P	10.22
MUFN-18X25X6.5P	6.12	MUFN-40X48X8P	7.48	MUFN-65X80X12P	10.22
MUFN-18X26X6P	5.33	MUFN-40X50X7P	5.44	MUFN-70X78X6P	42.23
MUFN-18X28X5.8P	6.23	MUFN-40X50X10P	6.01	MUFN-70X80X7.5P	10.33
MUFN-20X26X5P	4.08	MUFN-40X50X10.5P	6.01	MUFN-70X82X9P	11.33
MUFN-20X28X5.8P	4.75	MUFN-40X55X11P	7.71	MUFN-70X82X10P	11.33
MUFN-20X28X6.5P	5.33	MUFN-40X60X14P	7.57	MUFN-70X84X12P	11.43
MUFN-20X30X8P	4.99	MUFN-42X50X6P	8.72	MUFN-70X90X13.5P	11.56
MUFN-22X30X6.5P	4.64	MUFN-45X55X7.5P	6.70	MUFN-70X90X14P	11.56
MUFN-22X30X7P	6.12	MUFN-45X55X10P	6.71	MUFN-80X92X9P	13.60
MUFN-25X32X6P	6.57	MUFN-45X55X10.5P	6.57	MUFN-80X100X14P	13.82
MUFN-25X33X6P	5.21	MUFN-45X60X10P	8.03	MUFN-85X100X12P	15.87
MUFN-25X35X8P	5.77	MUFN-45X60X11P	7.71	MUFN-85X110X20P	20.64
MUFN-28X36X6P	4.99	MUFN-50X58X8P	7.03	MUFN-90X102X9P	16.20
MUFN-30X38X6P	4.52	MUFN-50X60X7.5P	6.79	MUFN-90X105X12P	14.52
MUFN-30X38X7P	6.90	MUFN-50X62X12P	7.74	MUFN-95X110X11.5P	15.48
MUFN-30X40X7P	4.52	MUFN-50X65X10.5P	9.52	MUFN-100X115X12P	15.76
MUFN-32X40X6P	5.77	MUFN-50X65X11P	9.30	MUFN-100X120X14P	16.10
MUFN-32X47X10.5P	6.36	MUFN-50X70X14P	9.30	MUFN-110X125X11P	17.91
MUFN-35X43X6P	6.01	MUFN-50X80X25P	12.68	MUFN-120X132.7X9.5P	38.72
MUFN-35X45X7.5P	5.21	MUFN-55X65X7.5P	9.30	MUFN-160X180X15P	25.80
MUFN-35X50X10.5P	7.12	MUFN-56X66X7.5P	9.52	MUFN-180X200X15P	29.78
MUFN-35X50X11P	12.03	MUFN-56X76X14P	11.10		
MUFN-36X44X6P	5.21	MUFN-60X70X7.5P	8.95		