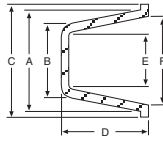


PLASTIC CAP PLUGS



Tapered Caps & Plugs For Misc. Applications



This style cap plug is equipped with a handy fold-down pull ring.

Tapered Caps & Plugs With Pull Ring

Part Number	A	B	C	D	E	F	List Price
CAP-00	.180	.115	5/16	13/32	.051	.118	\$ 0.21
CAP-0	.240	.175	3/8	3/8	.109	.175	0.32
CAP-1	.302	.240	15/32	3/8	.175	.240	0.22
CAP-1-X	.335	.265	15/32	3/8	.240	.275	0.22
CAP-2	.365	.300	17/32	3/8	.234	.301	0.22
CAP-3	.428	.360	19/32	3/8	.299	.365	0.19
CAP-3-X	.460	.390	5/8	3/8	.325	.396	0.22
CAP-4-X	.512	.447	5/8	3/8	.385	.448	0.04
CAP-5	.547	.490	23/32	1/2	.409	.485	0.04
CAP-5-X	.568	.500	3/4	7/16	.435	.503	0.05
CAP-6	.620	.531	3/4	1/2	.468	.555	0.04
CAP-7	.675	.590	7/8	17/32	.520	.605	0.05
CAP-7-X	.695	.610	27/32	1/5	.549	.634	0.07
CAP-8	.728	.641	7/8	1/2	.575	.665	0.05
CAP-8-X	.754	.675	7/8	5/8	.615	.690	0.05
CAP-9-X	.925	.725	1	3/4	.662	.760	0.05
CAP-10	.848	.750	1-1/32	5/8	.686	.785	0.05
CAP-11	.910	.802	1-3/32	3/4	.740	.846	0.16
CAP-11-X	.931	.820	1-1/8	5/8	.754	.868	0.05
CAP-13	1.091	.966	1-1/4	3/4	.902	1.025	0.16
CAP-13-X	1.145	1.002	1-5/16	3/4	.938	1.079	0.07
CAP-14-X	1.285	1.180	1-7/16	3/4	1.105	1.215	0.52
CAP-15	1.350	1.225	1-1/2	3/4	1.160	1.295	0.33
CAP-18	1.680	1.560	1-7/8	3/4	1.497	1.620	0.15
CAP-20	1.958	1.806	2.125	1	1.745	1.893	0.57
CAP-21	2.078	1.902	2-1/4	1	1.839	2.015	0.23
CAP-38	1.045	.980	1-1/4	1/2	.916	.984	0.22
CAP-220	2.132	1.980	2-1/4	1	1.915	2.068	0.23
CAP-230	2.330	2.156	2-5/8	1	2.094	2.264	0.64
CAP-240	2.465	2.300	2-5/8	1	2.235	2.400	0.30
CAP-250	2.605	2.395	2-5/8	1	2.331	2.541	0.32

Tapered Caps & Plugs For NPT Style Ports

Part Number	NPT Port Size	OD Size Tapered	HT	Min Std Pkg	List Price
CAP-2-X	1/8	.330/.396	3/8	50	\$ 0.07
CAP-4	1/4	.419/.485	3/8	50	0.07
CAP-6-X	3/8	.550/.631	7/16	50	0.10
CAP-9	1/2	.690/.788	9/16	50	0.10
CAP-12	3/4	.870/.975	5/8	120	0.05
CAP-12-X	3/4	.915/1.040	11/16	25	0.18
CAP-14	1	1.094/1.215	3/4	25	0.18
CAP-15	1	1.225/1.355	3/4	3	0.33
CAP-15-X	1	1.235/1.350	3/4	25	0.21
CAP-17	1-1/4	1.450/1.600	3/4	60	0.10
CAP-17-S	1-1/4	1.513/1.600	1/2	25	0.21
CAP-19	1-1/2	1.735/1.870	3/4	25	0.33
CAP-20-S	1-1/2	1.781/1.805	3/8	25	0.21
CAP-24-S	2	2.230/2.260	1/2	20	0.26

Part Number	NPT Port Size	OD Size Tapered	HT	Min Std Pkg	List Price
CAP-PR-9	1/8	.337/.375	1/4	50	\$ 0.10
CAP-PR-12	1/4	.436/.475	1/4	50	0.29
CAP-PR-17	3/8	.552/.615	3/8	50	0.16
CAP-PR-22	1/2	.668/.767	1/2	40	0.18
CAP-PR-27X	3/4	.878/.977	1/2	40	0.21
CAP-PR-32	1	1.113/1.212	1/2	25	0.23
CAP-PR-39	1-1/4	1.505/1.580	1/2	25	0.30
CAP-PR-43	1-1/2	1.780/1.860	1/2	20	0.34
CAP-PR-50	2	2.226/2.258	1/2	20	0.41

CAP PLUG APPLICATION CHART

CAP-	NPT		INCH THREAD		METRIC THREAD	
	CAPS	PLUGS	CAPS	PLUGS	CAPS	PLUGS
00				10/32	M2,M2.5	M5
0				1/4	M3,M3.5	M6
1				5/16	M5	M8x1
1-X					M6	
2			15/64	3/8	M7	M10x1.25
2-X		1/8				
3				7/16	M8x1	M12
3-X			3/8			M12x1.25
4	1/8	1/4		1/2	M10x1.25	M14
4-X			7/16			M14x1.5
5			1/2	9/16		
5-X					M12x1.25	M16
6	1/4			5/8		
6-X		3/8	9/16			M18
7			5/8		M14x1.5	M18x1.5
7-X						
8				3/4		M20
8-X	3/8				M16x1.5	M20x1.5
9		1/2				M22
9-X			3/4			M22x1.5
10				7/8	M18x1.5	M24
11	1/2					M24x2
11-X			7/8		M20x1.5	
12		3/4				
12-X				1-1/16	M22x1.5	M27x2
13	3/4				M24x2	
13-X			1-1/16			M30x2
14		1			M27x2	M33
17		1-1/4			M36x3	
17-S				1-5/8		
18	1-1/4		1-5/8	1-3/4	M39x3	
19		1-1/2		1-7/8		
20	1-1/2		1-7/8			
20-S						
21						
220						
230			2-1/4			
24-S		2				
240	2					
250			2-1/2			

PLASTIC CAP PLUGS



Female Threaded Cap Plugs for J.I.C. Fittings

Part Number	Std Thread Size	O.D. Size Tube	Dash Size	Min Std Pkg	List Price
CAP-G-2	7/16-20	1/4	#4	20	\$ 0.18
CAP-G-8	9/16-18	3/8	#6	20	0.18
CAP-G-14	3/4-16	1/2	#8	20	0.21
CAP-G-18	7/8-14	5/8	#10	20	0.21
CAP-G-20	7/8-18	5/8	#10	20	0.46
CAP-G-22	1-1/16-12	3/4	#12	20	0.26
CAP-G-25	1-3/16-12	7/8	#14	20	0.30
CAP-G-27	1-5/16-12	1	#16	20	0.30



O-Ring Face Fitting Caps

These low density polyethylene caps are designed to fit female o-ring face seals.

Part Number	Thread Size	Min Std Pkg	List Price
CAP-OR-4	9/16-18	35	\$ 0.19
CAP-OR-6	11/16-16	25	0.21
CAP-OR-8	13/16-16	25	0.23
CAP-OR-10	1-14	25	0.29
CAP-OR-12	1-3/16-12	25	0.31
CAP-OR-16	1-7/16-12	15	0.46
CAP-OR-20	1-11/16-12	10	1.16



Flat Face Fitting Caps

Part Number	Tube Size OD	Thread Size	Min Std Pkg	List Price
CAP-PDF-40	1/4	9/16-18.	25	\$ 0.29
CAP-PDF-60	3/8	11/16-16	25	0.26
CAP-PDF-80	1/2	13/16-16.	25	0.29
CAP-PDF-100	5/8	1-14	20	0.31
CAP-PDF-120	3/4	1-3/16-12	20	0.37
CAP-PDF-160	1	1-7/16-12	10	1.68



Male Threaded Pipe Plugs (Sq. Top)

Part Number	NPT Port Size	Thread Size	Min Std Pkg	List Price
CAP-P-18	1/8	0.364	25	\$ 0.10
CAP-P-28	1/4	0.477	25	0.18
CAP-P-38	3/8	0.612	25	0.21
CAP-P-48	1/2	0.758	25	0.21
CAP-P-68-H	3/4	0.968	25	0.23
CAP-P-88-H	1	1.214	20	0.93
CAP-TP-13	1-1/4	1.557	5	1.62
CAP-TP-15	1-1/2	1.796	5	1.62



Male Threaded Cap Plugs for Flared J.I.C. Fittings

Part Number	Std Thread Size	OD Size Tube	Dash Size	Min Std Pkg	List Price
CAP-PD-40	7/16-20	1/4	#4	25	\$ 0.31
CAP-PD-50	1/2-20	5/16	#5	25	0.31
CAP-PD-60	9/16-18	3/8	#6	25	0.18
CAP-PD-80	3/4-16	1/2	#8	25	0.18
CAP-PD-100	7/8-14	5/8	#10	25	0.21
CAP-PD-120	1-1/16-12	3/4	#12	25	0.21
CAP-PD-140	1-3/16-12	7/8	#14	20	0.32
CAP-PD-160	1-5/16-12	1	#16	20	0.32
CAP-PD-200	1-5/8-12	1-1/4	#20	15	0.39
CAP-PD-220	1-3/4-12	1-3/8	#22	10	0.99
CAP-PD-240	1-7/8-12	1-1/2	#24	10	0.89

PLASTIC CAP PLUGS



These low density polyethylene caps protect the faces of split flange connectors

Split Flange Coupling Caps - SAE CODE 61

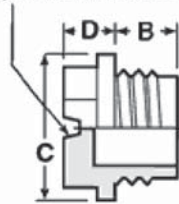
Part Number	Flange Size	Cap Size	Min Std Pkg	List Price
CAP-SF-10	5/8	1.35	50	\$ 0.15
CAP-SF-12	3/4	1.50	50	0.16
CAP-SF-16	1	1.75	35	0.18
CAP-SF-20	1-1/4	2.00	35	0.19
CAP-SF-24	1-1/2	2.38	25	0.30
CAP-SF-32	2	2.81	15	0.40
CAP-SF-40	2-1/2	3.31	15	0.56
CAP-SF-8	1/2	1.19	50	0.10

Split Flange Coupling Caps - SAE CODE 62

Part Number	Flange Size	Cap Size	Min Std Pkg	List Price
CAP-HPSF-8	1/2	1.25	10	\$ 1.00
CAP-HPSF-12	3/4	1.625	10	1.04
CAP-HPSF-16	1	1.87	10	1.07
CAP-HPSF-20	1-1/4	2.125	10	1.10
CAP-HPSF-24	1-1/2	2.5	10	1.24
CAP-HPSF-32	2	3.125	10	1.34



SCREWDRIVER SLOT



Threaded O-Ring Plugs

Part Number	Std Thread Size	B	C	D	Min Std Pkg	List Price
CAP-TF-9-OR	9/16-18	0.35	0.81	0.19	10	\$ 0.89
CAP-TF-12-OR	3/4-16	0.44	0.89	0.18	10	0.94

BOLTED SPLIT FLANGE PROTECTORS



3,000 PSI Flanges
SAE Code 61

Part Number	Port Size	Min Std Pkg	List Price
CAP-8218	1/2	10	\$ 1.21
CAP-8219	3/4	10	1.23
CAP-8220	1	10	1.32
CAP-8221	1-1/4	10	1.40
CAP-8222	1-1/2	10	1.48
CAP-8223	2	10	1.64
CAP-8224	2-1/2	10	1.64

5,000 PSI Flanges
SAE Code 62

CAP-XP-075	3/4	10	\$ 1.23
CAP-XP-100	1	10	1.32
CAP-XP-125	1-1/4	10	1.40
CAP-XP-150	1-1/2	10	1.48
CAP-XP-200	2	10	1.64

GREASE FITTING CAP

Low density polyethane cap plug for use with standard grease fittings.

Part Number	Description	List Price
CAP-GF-10	Cap Plug	\$ 0.16

CAP PLUG KIT

Part Number: Cap Plug Kit
List Price: \$ 179.39



Our new and improved cap plug kit contains 22% more cap plugs in an environmentally friendly corrugated box. Separated areas hold 625 cap plugs in 24 of the most popular sizes.

Cap Plug Number	QTY	Cap Plug Number	QTY	Cap Plug Number	QTY
CAP-2-X	50	CAP-PD-100	25	CAP-G-22	20
CAP-4	50	CAP-PD-120	25	CAP-G-25	20
CAP-6-X	50	CAP-PD-140	20	CAP-G-27	20
CAP-9	50	CAP-PD-160	20	CAP-P-28	25
CAP-12-X	25	CAP-G-2	20	CAP-P-38	25
CAP-14	25	CAP-G-8	20	CAP-P-48	25
CAP-PD-60	25	CAP-G-14	20	CAP-P-68-H	25
CAP-PD-80	25	CAP-G-18	20	CAP-P-88-H	20

CAP PLUG CASE

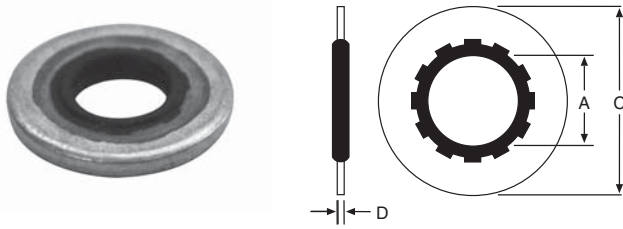
Part Number: Cap Plug Case
List Price: \$ 92.05

This rugged case has 24 empty compartments to hold a limited variety of cap plugs from the master kit (shown left).

Case only - cap plugs sold separately.

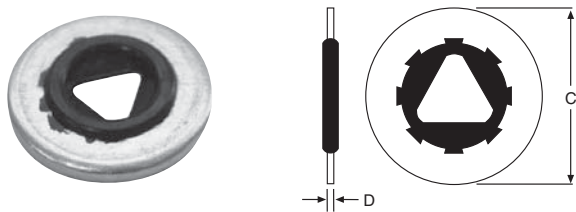


STYLE 110 FACE SEALS



Part Number	Max Screw Size	A Rubber I.D.	B Steel I.D.	C Steel O.D.	D Steel Thick.	List Price
DY-110X8	.164	.156	.255	.385	.041	\$ 1.27
DY-110X10	.177	.180	.317	.443	.050	1.77
DY-110X3/16	.190	.220	.281	.425	.054	3.47
DY-110X7/32	.216	.246	.307	.455	.054	12.26
DY-110X1/4	.250	.240	.381	.505	.054	2.05
DY-110X5/16	.312	.301	.488	.603	.054	2.05
DY-110X3/8	.375	.368	.546	.666	.054	2.05
DY-110X7/16	.437	.427	.618	.760	.054	5.24
DY-110X1/2	.500	.490	.696	.880	.054	5.82
DY-110X9/16	.562	.552	.759	1.067	.054	5.82
DY-110X5/8	.625	.615	.818	1.193	.054	7.12

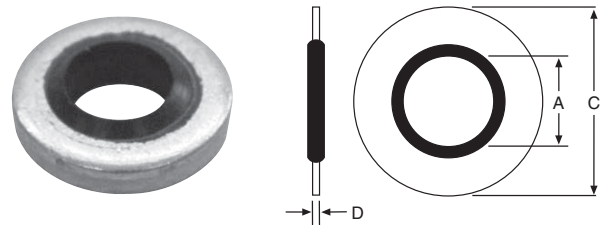
THREAD SEAL



Thread seals provide a positive seal directly against the threads of a bolt. Self-centering and easily installed.

Part Number	C	D	Thread Size	List Price
TS7500X10	.469	.051	-10	\$ 2.64
TS7500X1/4	.562	.051	1/4	2.64
TS7500X5/16	.687	.064	5/16	3.29
TS7500X3/8	.750	.064	3/8	3.43
TS7500X7/16	.906	.078	7/16	4.81
TS7500X1/2	1.000	.078	1/2	4.81
TS7500X7/8	1.562	.109	7/8	17.36

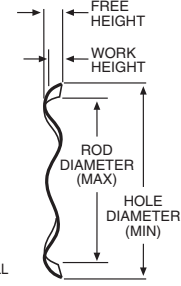
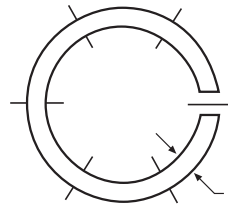
STYLE SB FACE SEALS



Part Number	A	C	D	List Price
DY-SB-001	.115	.250	.048	\$ 1.41
DY-SB-002	.157	.286	.048	1.41
DY-SB-003	.205	.330	.051	1.10
DY-SB-004	.270	.520	.051	1.10
DY-SB-005	.270	.525	.048	1.56
DY-SB-006	.322	.525	.048	1.56
DY-SB-007	.340	.560	.051	1.13
DY-SB-020A	.408	.625	.083	1.19
DY-SB-008	.443	.723	.083	1.19
DY-SB-009	.460	.750	.083	1.21
DY-SB-225	.531	.866	.059	1.24
DY-SB-021B	.541	.810	.083	1.21
DY-SB-010	.585	.875	.083	1.32
DY-SB-022BB	.625	.875	.083	1.34
DY-SB-011	.650	1.000	.083	1.36
DY-SB-023C	.680	.937	.083	1.38
DY-SB-012	.715	1.000	.097	1.38
DY-SB-024CC	.775	1.060	.097	1.52
DY-SB-025D	.848	1.125	.097	1.71
DY-SB-026E	.925	1.250	.097	1.88
DY-SB-013	.955	1.310	.097	3.29
DY-SB-027F	1.065	1.375	.097	2.28
DY-SB-240	1.083	1.417	.07	2.33
DY-SB-028	1.095	1.520	.097	2.96
DY-SB-014	1.150	1.440	.092	3.24
DY-SB-029G	1.213	1.500	.097	3.44
DY-SB-015	1.280	1.630	.128	3.70
DY-SB-031	1.329	1.685	.092	4.07
DY-SB-030H	1.334	1.685	.133	3.47
DY-SB-016	1.410	1.750	.133	7.97
DY-SB-032J	1.690	2.062	.133	6.65
DY-SB-033K	1.907	2.307	.103	7.71
DY-SB-019	2.030	2.500	.128	12.09
DY-SB-034	2.161	2.750	.133	13.03
DY-SB-036	2.385	2.875	.133	10.90
DY-SB-038	2.625	3.130	.133	17.48
DY-SB-039	2.995	3.550	.133	19.59

WAVE SPRINGS

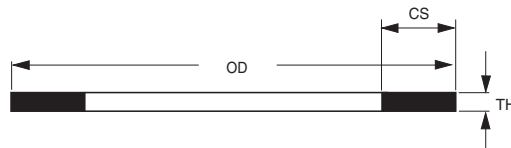
Wave Springs offer a convenient method of exerting a pre-load on vee packing where little or no adjustment is available. Because of a low fatigue factor, the spring should provide a proper pre-load throughout the life of the packing.



Part Number	Hole Diameter (Min)	Rod Diameter (Max)	Free Height	Work Height	Radial Wall	List Price
SSR-0125	1.250	.960	.150	.078	.133	\$ 4.20
SSR-0150	1.500	1.170	.170	.078	.143	4.46
SSR-0175	1.750	1.440	.140	.078	.143	4.46
SSR-0187	1.875	1.560	.150	.078	.143	4.46
SSR-0200	2.000	1.680	.140	.093	.150	4.84
SSR-0225	2.250	1.930	.170	.093	.150	5.13
SSR-0237	2.375	1.990	.160	.093	.178	5.29
SSR-0250	2.500	2.120	.170	.093	.178	5.57
SSR-0262	2.625	2.240	.190	.093	.178	5.57
SSR-0275	2.750	2.340	.170	.109	.188	6.12
SSR-0300	3.000	2.590	.190	.109	.188	6.55
SSR-0312	3.120	2.710	.210	.109	.188	6.49
SSR-0325	3.250	2.750	.200	.109	.233	7.04
SSR-0350	3.500	3.000	.230	.109	.233	13.11
SSR-0362	3.625	3.120	.240	.109	.233	13.37
SSR-0375	3.750	3.250	.260	.109	.233	8.26
SSR-0425	4.250	3.740	.210	.109	.233	26.03
SSR-0462	4.625	4.125	.230	.109	.233	10.16
SSR-0512	5.125	4.610	.340	.125	.233	36.44

CARBON STEEL SHIMS

These carbon steel shims are commonly used with vee packing sets to fill the empty space in a gland.



Part Number	OD	Thickness	Cross Section	Price	Part Number	OD	Thickness	Cross Section	Price
SSRS-0150	1.500	.024	.150	\$ 1.75	SSRS-0237	2.375	.024	.178	\$ 3.65
SSRS-0175	1.750	.024	.150	1.75	SSRS-0312	3.125	.030	.188	2.33
SSRS-0200	2.000	.024	.150	2.45	SSRS-0375	3.750	.030	.233	2.75

GRADE C LOCKNUTS

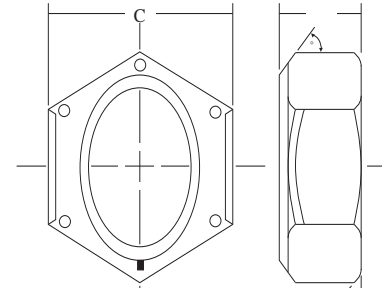
These fine-threaded Grade C locknuts are formed from medium carbon, heat-treated steel and are designed to be used with a Grade 8 bolt. Smaller size locknuts employ an automation style collar while the larger ones use a full collar design. Both locknut types are stocked with cadmium and wax plating.

Automation Style

Part Number	Size	Thread Pitch	C Width Across Flats		D Overall Thickness		List Price
			Max	Min	Max	Min	
LN-1/2-13	1/2	13	0.7500	0.736	0.510	0.490	\$ 0.91
LN-1/2-20	1/2	20	0.752	0.741	0.609	0.579	0.54
LN-1-14	1	14	1.5020	1.450	0.887	0.831	4.49
LN-3/4-16	3/4	16	1.1250	1.088	0.665	0.617	2.70
LN-5/8-18	5/8	18	0.9375	0.922	0.645	0.621	1.29
LN-7/8-14	7/8	14	1.3145	1.269	0.922	0.724	3.58
LN-7/16-20	7/16	20	0.627	0.616	0.468	0.438	2.33



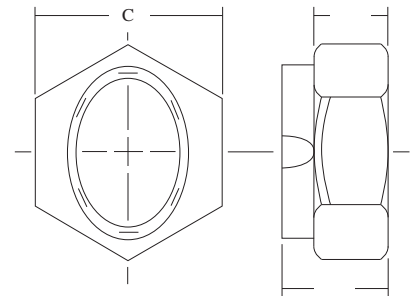
Automation Style



Full Collar Style

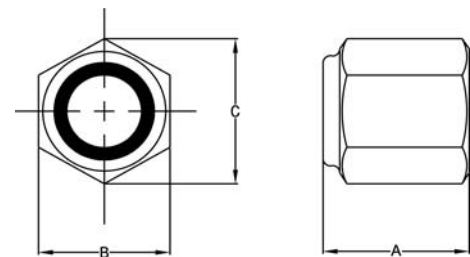
Part Number	Size	Thread Pitch	C Width Across Flats		D Overall Thickness		F Hex Height		List Price
			Max	Min	Max	Min	Max	Min	
LN-1-1/2-12	1-1/2	12	2.250	2.175	1.317	1.246	0.885	0.843	\$ 23.80
LN-1-1/4-12	1-1/4	12	1.876	1.812	1.094	1.030	0.719	0.698	14.36
LN-1-1/8-12	1-1/8	12	1.687	1.631	0.999	0.939	0.657	0.636	11.63
LN-1-3/4-12	1-3/4	12	2.625	2.538	1.540	1.460	1.012	0.989	43.65
LN-1-3/8-12	1-3/8	12	2.062	1.994	1.206	1.138	0.795	0.771	21.29
LN-2-12	2	12	3.000	2.900	1.763	1.675	1.158	1.134	96.72
LN-2-1/2-12	2-1/2	12	3.750	3.625	2.193	2.089	1.930	1.840	116.93

Full Collar Style

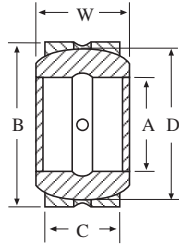


Part Number	Bar Size	A	B	C	List Price
CM-LN45050	1/2"-20	0.60	0.75	0.84	\$ 4.14
CM-LN45062	5/8"-18	0.75	0.94	1.06	4.94
CM-LN45075	3/4"-16	0.88	1.06	1.19	18.03
CM-LN45087	7/8"-14	1.00	1.25	1.40	9.93
CM-LN45100	1"-14	1.06	1.44	1.62	12.41
CM-LN45101	1"-14	0.88	1.62	1.83	16.02
CM-LN45112	1-1/8"-12	1.19	1.62	1.83	11.56
CM-LN45126	1-1/4"-12	1.38	1.81	2.06	21.47
CM-LN45151	1-1/2"-12	1.62	2.19	2.44	21.06
CM-LN45152	1-1/2"-12	0.81	2.19	2.44	22.14
CM-LN45175	1-3/4"-12	1.50	2.75	3.06	54.26
CM-LN45200	2"-12	1.62	3.12	3.50	57.92
CM-LN45225	2-1/4"-12	1.94	3.50	3.94	123.34
CM-LN45226	2-1/4"-12	2.81	3.50	3.94	168.88
CM-LN45250	2-1/2"-12	2.25	4.00	4.60	267.43

Nylon Insert Lock Nut



SELF ALIGNING BEARINGS



SUFFIX:
2RS = SEALED BEARINGS

SELF ALIGNING BEARINGS

Part Number	A	B	W	C	D	Price
HH008ES	1/2	.875	.437	.375	.709	\$ 21.23
HH010ES	5/8	1.062	.547	.469	0.899	23.35
HH012ES	3/4	1.250	.656	.562	1.083	21.95
HH014ES	7/8	1.438	.765	.656	1.260	19.81
HH100ES	1	1.625	.875	.750	1.417	19.11
HH104ES	1-1/4	2.000	1.093	.937	1.772	27.59
HH106ES	1-3/8	2.187	1.187	1.031	1.929	41.75
HH108ES	1-1/2	2.438	1/312	1/125	2.165	36.10
HH108ES2RS	1-1/2	2.438	1.312	1.125	2.165	48.11
HH112ES	1-3/4	2.812	1.531	1.312	2.520	49.55
HH112ES2RS	1-3/4	2.812	1.531	1.312	2.520	62.27
HH200ES	2	3.187	1.750	1.500	2.874	67.23
HH200ES2RS	2	3.187	1.750	1.500	2.874	80.68
HH204ES	2-1/4	3.562	1.969	1.687	3.228	92.00
HH204ES2RS	2-1/4	3.562	1.969	1.687	3.228	120.33
HH208ES	2-1/2	3.937	2.187	1.875	3.583	124.57
HH208ES2RS	2-1/2	3.937	2.187	1.875	3.583	155.71
HH212ES	2-3/4	4.375	2.406	2.062	3.937	146.27
HH212ES2RS	2-3/4	4.375	2.406	2.062	3.937	181.18
HH300ES	3	4.750	2.625	2.250	4.331	219.40
HH300ES2RS	3	4.750	2.625	2.250	4.331	250.55
HH304ES	3-1/4	5.125	2.844	2.437	4.685	278.86
HH308ES	3-1/2	5.500	3.062	2.625	5.039	389.26
HH308ES2RS	3-1/2	5.500	3.062	2.625	5.039	431.73
HH312ES	3-3/4	5.875	3.281	2.812	5.394	420.40
HH400ES	4	6.250	3.500	3.000	5.748	567.61
HH400ES2RS	4	6.250	3.500	3.000	5.748	629.89
HH408ES	4-1/2	7.000	3.937	3.375	6.457	743.13
HH500ES	5	7.750	4.375	3.750	7.205	948.38
HH600ES	6	8.750	4.750	4.125	8.150	1,060.96

SET SCREWS

These set screws are used on many cylinder headnuts. Use nylon plugs to ensure no damage to the headnut threads. All set screws employ Allen wrench heads.

Part Number	Thread Size	Length	List Price
SS-1/4-20X1/2	1/4-20	1/2	\$ 0.94
SS-1/4-20X3/8	1/4-20	3/8	1.11
SS-1/4-28X1/4	1/4-28	1/4	0.89
SS-1/4-28X3/8	1/4-28	3/8	0.89
SS-5/16-18X1/4	5/16-18	1/4	0.89
SS-5/16-18X3/8	5/16-18	3/8	0.89
SS-5/16-18X3/4	5/16-18	3/4	1.20
SS-5/16-24X5/16	5/16-24	5/16	0.38
SS-5/16-24X3/8	5/16-24	3/8	1.20
SS-3/8-16X3/8	3/8-16	3/8	0.68
SS-3/8-16X1/2	3/8-16	1/2	0.94
SS-3/8-16X5/8	3/8-16	5/8	1.16
SS-3/8-16X7/8	3/8-16	7/8	1.33
SS-1/2-13X1/2	1/2-13	1/2	1.57
SS-1/2-13X5/8	1/2-13	5/8	1.81
SS-#10-24X1/4	#10-24	1/4	0.89

NYLON PLUGS

These nylon plugs are used with headnut set screws to ensure that there is no damage to the headnut threads.

Part Number	Diameter	Length	List Price
NYPLUG-125-125	1/8	1/8	\$ 0.60
NYPLUG-125-156	1/8	5/32	0.60
NYPLUG-125-875	1/8	7/8	0.41
NYPLUG-187-109	3/16	7/64	0.42
NYPLUG-187-187	3/16	3/16	0.60
NYPLUG-187-250	3/16	1/4	0.61
NYPLUG-250-070	1/4	0.070	0.73
NYPLUG-250-125	1/4	1/8	0.60
NYPLUG-250-187	1/4	3/16	0.60
NYPLUG-250-250	1/4	1/4	0.50
NYPLUG-312-125	5/16	1/8	0.60
NYPLUG-312-250	5/16	1/4	1.83
NYPLUG-312-312	5/16	5/16	1.73
NYPLUG-375-250	3/8	1/4	0.60
NYPLUG-500-875-125H	1/2	7/8	4.51


MANUAL BLEEDER VALVES

Part Number	Thread Size	List Price
WH705	1/8 NPT	\$ 5.10

NYLON PLUG KIT

Part Number: Nylon Plug Kit

List Price: \$ 101.10

 220 Pieces 11 Sizes	Nyplug-125-125 1/8" x 1/8" 20 pcs.	Nyplug-187-109 3/16" x 7/64" 20 pcs.	Nyplug-250-125 1/4" x 1/8" 20 pcs.	
	Nyplug-125-156 1/8" x 5/32" 20 pcs.	Nyplug-187-187 3/16" x 3/16" 20 pcs.	Nyplug-250-187 1/4" x 3/16" 20 pcs.	Nyplug-312-125 5/16" x 1/8" 20 pcs.
	Nyplug-125-875 1/8" x 7/8" 20 pcs.	Nyplug-187-250 3/16" x 1/4" 20 pcs.	Nyplug-250-250 1/4" x 1/4" 20 pcs.	Nyplug-375-250 3/8" x 1/4" 20 pcs.

WIND-IN LOCK WIRES

Part Number	Thickness	Length	List Price
LW-093-1262	3/32 sq.	12-5/8	\$ 21.04
MARION-35240	1/8 sq.	10-1/4	9.72
MARION-35250	1/8 sq.	13-3/8	9.17
MARION-35260	1/8 sq.	16-3/8	9.33
MARION-35270	1/8 sq.	19-1/4	10.72
MARION-1031	3/16 sq.	21.00	12.13
1/8 RD WIRE	1/8 round	11	1.74

FILTER VENT PLUGS



These plugs are used to allow air to pass in and out of the non-pressurized end of a single-acting cylinder.

Part Number	NPT Port Size	List Price
FV-.125	1/8	\$ 4.41
FV-.250	1/4	5.98
FV-.375	3/8	7.22
FV-.500	1/2	8.67
FV-.750	3/4	13.34
FV-1.000	1	15.98

LOCTITE

Threadlocker 242 locks fasteners 1/4" and larger yet allows easy disassembly with hand tools. Prevents rust and corrosion.

Part Number	Application	List Price
LOCTITE-24205	Removable Threadlocker 0.5 ml bottle	\$ 10.84
LOCTITE-24221	Removable Threadlocker 10 ml bottle	35.86
LOCTITE-24231	Removable Threadlocker 50 ml bottle	98.11
LOCTITE-27105	High Strength Threadlocker 0.5 ml bottle	7.42
LOCTITE-29021	Penetrating Threadlocker 10 ml bottle	35.86
LOCTITE-29031	Penetrating Threadlocker 50 ml bottle	98.11
LOCTITE-54531	Hyd/Pneum Thread Sealant 50 ml tube	99.21
LOCTITE-76764	Anti Seize Lubricant 16 oz brush can	50.86
LOCTITE-82325	Super Lube 3 oz tube	20.04

SEAL LUBE™

O-Ring Lubricant



Part Number: SEAL LUBE

List Price: \$ 21.20

Seal-Lube™ lubricant is a thick, clear, high viscosity silicone oil recommended for use with most seal compounds (except silicone) and a wide variety of hydraulic fluids. Insoluble in water, alcohol, petroleum oil and glycol, Seal-Lube™ can prolong seal life when applied prior to seal installation. Chemically inert and non-toxic, Seal-Lube™ retains its viscosity over a wide temperature range. The handy squeeze 2 ounce bottle dispenses just enough where you want it.

TURBO LOCK

Turbo Lock threadlocker adhesive series is an economical alternative to Loctite.

Part Number	Application	List Price
THREAD LOCKER-11-001	Removable Threadlocker 2 ml bottle	\$ 4.45
THREAD LOCKER-11-010	Removable Threadlocker 10 ml bottle	31.03
THREAD LOCKER-11-050	Removable Threadlocker 50 ml bottle	54.30
THREAD LOCKER-14-001	High Strength Threadlocker 2 ml bottle	4.45
THREAD LOCKER-14-250	High Strength Threadlocker 250 ml bottle	186.50
THREAD LOCKER-16-010	Penetrating Threadlocker 10 ml bottle	19.22
THREAD LOCKER-16-050	Penetrating Threadlocker 50 ml bottle	49.75

TEFLON TAPE

Part Number: TEFLON TAPE

List Price: \$ 1.43




1/2" Wide by 520" Roll

GREASE FITTING KIT

Part Number: GREASE FITTING KIT

List Price: \$ 67.33



 32 Pieces	1/8" NPT Straight 6 pcs.	1/4" - 28 Straight 6 pcs.
	3/16" Drive Straight 4 pcs.	1/8"- NPT 45 1/8"-NPT 90 3 pcs. each
	1/4"- 28 45 1/4"- 28 90 3 pcs. each	5/16" Drive Straight 4 pcs.


Part Number	Description	List Price
GF-125NPTS	1/8" NPT STRAIGHT	\$ 0.95
GF-125NPT45	1/8" NPT 45°	1.94
GF-125NPT90	1/8" NPT 90°	1.94
GF-187DS	3/16" DRIVE STRAIGHT	0.85
GF-250-28S	1/4"-28 STRAIGHT	0.64
GF-250-28-45	1/4"-28 45°	1.71
GF-250-28-90	1/4"-28 90°	1.71
GF-312DS	5/16" DRIVE STRAIGHT	1.10

WOODRUFF KEY KIT

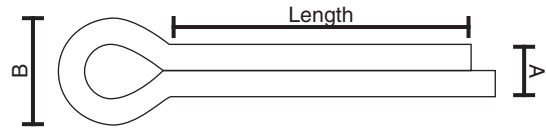
Part Number: WOODRUFF KEYS KIT

List Price: \$ 76.96



 65 Pieces	1/8" X 1/2" No. 3 16 pcs.	1/8" X 5/8" No. 5 15 pcs.
	3/32" X 5/8" No. 6 15 pcs.	3/16" X 3/4" No. 9 10 pcs.
	1/4" X 7/8" No. A 5 pcs.	1/4" X 1" No. 15 4 pcs.

COTTER PINS




Part Number	Length	A	B	List Price
CP-1X3/32	1	.082	3/16	\$ 0.39
CP-1-1/4X1/8	1-1/4	.115	1/4	0.28
CP-1-1/2X5/32	1-1/2	.150	5/16	0.39
CP-1-3/4X3/16	1-3/4	3/16	.390	0.22
CP-2X3/16	2	.176	3/8	0.48
CP-2X1/4	2	.225	1/2	0.39
CP-2-1/2X5/32	2-1/2	5/32	.357	0.29
CP-2-1/2X1/8	2-1/2	.115	1/4	0.28
CP-2-1/2X3/16	2-1/2	.176	3/8	0.48
CP-2-1/2X1/4	2-1/2	.225	1/2	0.54
CP-3X5/32	3	.150	5/16	0.50
CP-3X1/4	3	1/4	.520	1.33
CP-3-1/2X1/4	3-1/2	.225	1/2	0.73
CP-4X1/4	4	.225	1/2	0.84
CP-5X1/4	5	.225	1/2	2.36
CP-6X5/16	6	.280	5/8	3.16

COTTER PIN KIT

Part Number: COTTER PIN KIT

List Price: \$ 34.50



 555 Pieces	1/16" X 1" 150 pcs.	3/32" X 1" 150 pcs.
	3/32" X 1-1/2" 100 pcs.	1/8" X 1-1/4" 75 pcs.
	1/8" X 2" 50 pcs.	5/32" X 2-1/2" 30 pcs.