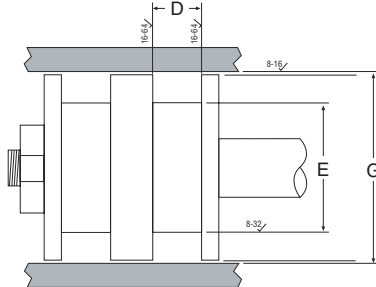
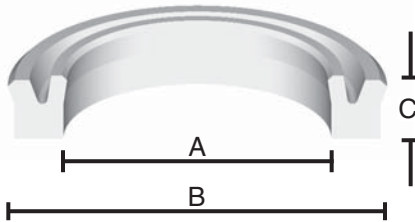


# STYLE DPU HEAVY DUTY PISTON U-SEALS



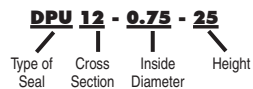
Specifically designed as piston seals, these u-seals are engineered to seal on their outside diameter. They offer extended service life and maximum reliability in piston sealing.



## SEAL INFORMATION

MATERIAL	92A URETHANE
MAX SPEED	3 FT/SEC
TEMPERATURE RANGE	-65° TO +230° F
PRESSURE RANGE	0 TO 6,000 PSI

### PART NUMBERS



## MAXIMUM EXTRUSION GAP

PRESSURE	1000 psi	3000 psi	5000 psi	6000 psi
MAX DIAM. GAP	0.032"	0.015"	0.012"	0.009"

PISTON U-SEALS

Part Number	A NOM. I.D.	B NOM. O.D.	C HT.	D GROOVE WIDTH	E GROOVE DIAMETER	G BORE DIAMETER	List Price
<b>1/8" C/S</b>							
DPU12-0.75-12	3/4	1	0.125	0.156 <sup>+0.015</sup> / <sub>-0.000</sub>	0.750 <sup>+0.000</sup> / <sub>-0.005</sub>	1.000 <sup>+0.003</sup> / <sub>-0.000</sub>	\$ 6.70
DPU12-1.00-25	1	1-1/4	0.250	0.281 <sup>+0.015</sup> / <sub>-0.000</sub>	1.000 <sup>+0.000</sup> / <sub>-0.005</sub>	1.250 <sup>+0.003</sup> / <sub>-0.000</sub>	7.93
<b>3/16" C/S</b>							
DPU18-1.25-31	1-1/4	1-5/8	0.313	0.343 <sup>+0.015</sup> / <sub>-0.000</sub>	1.250 <sup>+0.000</sup> / <sub>-0.007</sub>	1.625 <sup>+0.003</sup> / <sub>-0.000</sub>	\$ 12.84
DPU18-1.37-31	1-3/8	1-3/4	0.313	0.343 <sup>+0.015</sup> / <sub>-0.000</sub>	1.375 <sup>+0.000</sup> / <sub>-0.007</sub>	1.750 <sup>+0.003</sup> / <sub>-0.000</sub>	10.64
DPU18-1.75-31	1-3/4	2-1/8	0.313	0.343 <sup>+0.015</sup> / <sub>-0.000</sub>	1.750 <sup>+0.000</sup> / <sub>-0.007</sub>	2.125 <sup>+0.003</sup> / <sub>-0.000</sub>	12.54
DPU18-1.75-37	1-3/4	2-1/8	0.375	0.406 <sup>+0.015</sup> / <sub>-0.000</sub>	1.750 <sup>+0.000</sup> / <sub>-0.007</sub>	2.125 <sup>+0.003</sup> / <sub>-0.000</sub>	9.02
DPU18-2.00-37	2	2-3/8	0.375	0.406 <sup>+0.015</sup> / <sub>-0.000</sub>	2.000 <sup>+0.000</sup> / <sub>-0.008</sub>	2.375 <sup>+0.003</sup> / <sub>-0.000</sub>	11.16
DPU18-2.12-18	2-1/8	2-1/2	0.188	0.219 <sup>+0.015</sup> / <sub>-0.000</sub>	2.125 <sup>+0.000</sup> / <sub>-0.008</sub>	2.500 <sup>+0.003</sup> / <sub>-0.000</sub>	16.38
DPU18-2.12-31	2-1/8	2-1/2	0.313	0.343 <sup>+0.015</sup> / <sub>-0.000</sub>	2.125 <sup>+0.000</sup> / <sub>-0.008</sub>	2.500 <sup>+0.003</sup> / <sub>-0.000</sub>	16.38
DPU18-2.12-37	2-1/8	2-1/2	0.375	0.406 <sup>+0.015</sup> / <sub>-0.000</sub>	2.125 <sup>+0.000</sup> / <sub>-0.008</sub>	2.500 <sup>+0.003</sup> / <sub>-0.000</sub>	16.38
DPU18-3.12-37	3-1/8	3-1/2	0.375	0.406 <sup>+0.015</sup> / <sub>-0.000</sub>	3.125 <sup>+0.000</sup> / <sub>-0.009</sub>	3.500 <sup>+0.003</sup> / <sub>-0.000</sub>	18.96
<b>7/32" C/S</b>							
DPU21-0.25-37	1/4	11/16	0.375	0.406 <sup>+0.015</sup> / <sub>-0.000</sub>	0.250 <sup>+0.000</sup> / <sub>-0.004</sub>	0.688 <sup>+0.003</sup> / <sub>-0.000</sub>	\$ 6.23
<b>1/4" C/S</b>							
DPU25-1.00-35	1	1-1/2	0.357	0.388 <sup>+0.015</sup> / <sub>-0.000</sub>	1.000 <sup>+0.000</sup> / <sub>-0.005</sub>	1.500 <sup>+0.003</sup> / <sub>-0.000</sub>	\$ 8.28
DPU25-1.00-37	1	1-1/2	0.375	0.406 <sup>+0.015</sup> / <sub>-0.000</sub>	1.000 <sup>+0.000</sup> / <sub>-0.005</sub>	1.500 <sup>+0.003</sup> / <sub>-0.000</sub>	8.55

# STYLE DPU HEAVY DUTY PISTON U-SEALS

PISTON U-SEALS

Part Number	A NOM. I.D.	B NOM. O.D.	C HT.	D GROOVE WIDTH	E GROOVE DIAMETER	G BORE DIAMETER	List Price
<b>1/4" C/S</b>							
DPU25-1.12-31	1-1/8	1-5/8	0.313	0.343 +0.015 -0.000	1.125 +0.000 -0.005	1.625 +0.003 -0.000	\$ 8.92
DPU25-1.25-37	1-1/4	1-3/4	0.375	0.406 +0.015 -0.000	1.250 +0.000 -0.007	1.750 +0.003 -0.000	9.87
DPU25-1.50-31	1-1/2	2	0.313	0.343 +0.015 -0.000	1.500 +0.000 -0.007	2.000 +0.003 -0.000	10.52
DPU25-1.50-37	1-1/2	2	0.375	0.406 +0.015 -0.000	1.500 +0.000 -0.007	2.000 +0.003 -0.000	10.52
DPU25-1.75-37	1-3/4	2-1/4	0.375	0.406 +0.015 -0.000	1.750 +0.000 -0.007	2.250 +0.003 -0.000	13.27
DPU25-2.00-37	2	2-1/2	0.375	0.406 +0.015 -0.000	2.000 +0.000 -0.008	2.500 +0.003 -0.000	13.58
DPU25-2.06-25	2-1/16	2-9/16	0.250	0.281 +0.015 -0.000	2.063 +0.000 -0.008	2.563 +0.003 -0.000	17.72
DPU25-2.06-34	2-1/16	2-9/16	0.344	0.375 +0.015 -0.000	2.063 +0.000 -0.008	2.563 +0.003 -0.000	17.72
DPU25-2.25-31	2-1/4	2-3/4	0.313	0.343 +0.015 -0.000	2.250 +0.000 -0.008	2.750 +0.003 -0.000	18.45
DPU25-2.25-37	2-1/4	2-3/4	0.375	0.406 +0.015 -0.000	2.250 +0.000 -0.008	2.750 +0.003 -0.000	14.70
DPU25-2.50-37	2-1/2	3	0.375	0.406 +0.015 -0.000	2.500 +0.000 -0.008	3.000 +0.003 -0.000	14.08
DPU25-2.75-37	2-3/4	3-1/4	0.375	0.406 +0.015 -0.000	2.750 +0.000 -0.008	3.250 +0.003 -0.000	15.46
DPU25-3.00-37	3	3-1/2	0.375	0.406 +0.015 -0.000	3.000 +0.000 -0.009	3.500 +0.003 -0.000	15.80
DPU25-3.12-37	3-1/8	3-5/8	0.375	0.406 +0.015 -0.000	3.125 +0.000 -0.009	3.625 +0.003 -0.000	19.51
DPU25-3.25-37	3-1/4	3-3/4	0.375	0.406 +0.015 -0.000	3.250 +0.000 -0.009	3.750 +0.003 -0.000	16.69
DPU25-3.50-37	3-1/2	4	0.375	0.406 +0.015 -0.000	3.500 +0.000 -0.009	4.000 +0.004 -0.000	18.73
DPU25-3.62-37	3-5/8	4-1/8	0.375	0.406 +0.015 -0.000	3.625 +0.000 -0.009	4.125 +0.004 -0.000	19.03
DPU25-3.75-37	3-3/4	4-1/4	0.375	0.406 +0.015 -0.000	3.750 +0.000 -0.009	4.250 +0.004 -0.000	19.28
DPU25-4.00-37	4	4-1/2	0.375	0.406 +0.015 -0.000	4.000 +0.000 -0.009	4.500 +0.004 -0.000	23.87
DPU25-4.00-56	4	4-1/2	0.563	0.594 +0.015 -0.000	4.000 +0.000 -0.009	4.500 +0.004 -0.000	24.35
DPU25-4.50-37	4-1/2	5	0.375	0.406 +0.015 -0.000	4.500 +0.000 -0.009	5.000 +0.004 -0.000	24.81
DPU25-4.50-43	4-1/2	5	0.438	0.468 +0.015 -0.000	4.500 +0.000 -0.009	5.000 +0.004 -0.000	33.50
DPU25-4.50-56	4-1/2	5	0.563	0.594 +0.015 -0.000	4.500 +0.000 -0.009	5.000 +0.004 -0.000	26.13
DPU25-5.00-37	5	5-1/2	0.375	0.406 +0.015 -0.000	5.000 +0.000 -0.010	5.500 +0.004 -0.000	26.36
DPU25-5.00-56	5	5-1/2	0.563	0.594 +0.015 -0.000	5.000 +0.000 -0.010	5.500 +0.004 -0.000	33.15
DPU25-5.50-25	5-1/2	6	0.250	0.281 +0.015 -0.000	5.500 +0.000 -0.010	6.000 +0.004 -0.000	33.15
DPU25-5.50-37	5-1/2	6	0.375	0.406 +0.015 -0.000	5.500 +0.000 -0.010	6.000 +0.004 -0.000	33.15
DPU25-5.50-50	5-1/2	6	0.500	0.531 +0.015 -0.000	5.500 +0.000 -0.010	6.000 +0.004 -0.000	33.15
DPU25-5.50-56	5-1/2	6	0.563	0.594 +0.015 -0.000	5.500 +0.000 -0.010	6.000 +0.004 -0.000	33.15

# STYLE DPU HEAVY DUTY PISTON U-SEALS



PISTON U-SEALS

Part Number	A NOM. I.D.	B NOM. O.D.	C HT.	D GROOVE WIDTH	E GROOVE DIAMETER	G BORE DIAMETER	List Price
<b>5/16" C/S</b>							
DPU31-1.12-50	1-1/8	1-3/4	0.500	0.531 +0.015 -0.000	1.125 +0.000 -0.005	1.750 +0.003 -0.000	\$ 10.36
DPU31-1.25-47	1-1/4	1-7/8	0.469	0.500 +0.015 -0.000	1.250 +0.000 -0.007	1.875 +0.003 -0.000	10.76
DPU31-1.37-37	1-3/8	2	0.375	0.406 +0.015 -0.000	1.375 +0.000 -0.007	2.000 +0.003 -0.000	16.19
DPU31-1.37-43	1-3/8	2	0.438	0.468 +0.015 -0.000	1.375 +0.000 -0.007	2.000 +0.003 -0.000	12.17
DPU31-1.37-44	1-3/8	2	0.440	0.471 +0.015 -0.000	1.375 +0.000 -0.007	2.000 +0.003 -0.000	17.18
DPU31-1.37-50	1-3/8	2	0.500	0.531 +0.015 -0.000	1.375 +0.000 -0.007	2.000 +0.003 -0.000	12.17
DPU31-1.62-50	1-5/8	2-1/4	0.500	0.531 +0.015 -0.000	1.625 +0.000 -0.007	2.250 +0.003 -0.000	12.54
DPU31-1.87-37	1-7/8	2-1/2	0.375	0.406 +0.015 -0.000	1.875 +0.000 -0.007	2.500 +0.003 -0.000	12.93
DPU31-1.87-50	1-7/8	2-1/2	0.500	0.531 +0.015 -0.000	1.875 +0.000 -0.007	2.500 +0.003 -0.000	20.20
DPU31-2.37-37	2-3/8	3	0.375	0.406 +0.015 -0.000	2.375 +0.000 -0.008	3.000 +0.003 -0.000	16.01
DPU31-2.37-50	2-3/8	3	0.500	0.531 +0.015 -0.000	2.375 +0.000 -0.008	3.000 +0.003 -0.000	19.58
DPU31-2.87-50	2-7/8	3-1/2	0.500	0.531 +0.015 -0.000	2.875 +0.000 -0.008	3.500 +0.003 -0.000	19.86
DPU31-3.37-37	3-3/8	4	0.375	0.406 +0.015 -0.000	3.375 +0.000 -0.009	4.000 +0.004 -0.000	20.19
DPU31-3.37-50	3-3/8	4	0.500	0.531 +0.015 -0.000	3.375 +0.000 -0.009	4.000 +0.004 -0.000	20.19
DPU31-3.62-37	3-5/8	4-1/4	0.375	0.406 +0.015 -0.000	3.625 +0.000 -0.009	4.250 +0.004 -0.000	21.16
DPU31-3.62-50	3-5/8	4-1/4	0.500	0.531 +0.015 -0.000	3.625 +0.000 -0.009	4.250 +0.004 -0.000	21.16
DPU31-3.87-50	3-7/8	4-1/2	0.500	0.531 +0.015 -0.000	3.875 +0.000 -0.009	4.500 +0.004 -0.000	23.87
DPU31-5.37-50	5-3/8	6	0.500	0.531 +0.015 -0.000	5.375 +0.000 -0.010	6.000 +0.004 -0.000	38.78
<b>.32" C/S</b>							
DPU32-1.62-39	1-5/8	2.266	0.390	0.421 +0.015 -0.000	1.625 +0.000 -0.007	2.266 +0.003 -0.000	\$ 13.84
<b>3/8" C/S</b>							
DPU37-1.75-62	1-3/4	2-1/2	0.625	0.656 +0.015 -0.000	1.750 +0.000 -0.007	2.500 +0.003 -0.000	\$ 15.67
DPU37-2.25-62	2-1/4	3	0.625	0.656 +0.015 -0.000	2.250 +0.000 -0.008	3.000 +0.003 -0.000	17.21
DPU37-2.50-62	2-1/2	3-1/4	0.625	0.656 +0.015 -0.000	2.500 +0.000 -0.008	3.250 +0.003 -0.000	32.75
DPU37-2.75-37	2-3/4	3-1/2	0.375	0.406 +0.015 -0.000	2.750 +0.000 -0.008	3.500 +0.003 -0.000	18.30
DPU37-2.75-62	2-3/4	3-1/2	0.625	0.656 +0.015 -0.000	2.750 +0.000 -0.008	3.500 +0.003 -0.000	22.17
DPU37-3.00-37	3	3-3/4	0.375	0.406 +0.015 -0.000	3.000 +0.000 -0.009	3.750 +0.003 -0.000	21.89
DPU37-3.00-47-AN	3	3-3/4	0.469	0.500 +0.015 -0.000	3.000 +0.000 -0.009	3.750 +0.003 -0.000	21.89
DPU37-3.00-50	3	3-3/4	0.500	0.531 +0.015 -0.000	3.000 +0.000 -0.009	3.750 +0.003 -0.000	18.80

# STYLE DPU HEAVY DUTY PISTON U-SEALS

PISTON U-SEALS

Part Number	A NOM. I.D.	B NOM. O.D.	C HT.	D GROOVE WIDTH	E GROOVE DIAMETER	G BORE DIAMETER	List Price
<b>3/8" C/S</b>							
DPU37-3.25-37	3-1/4	4	0.375	0.406 <sup>+0.015</sup> <sub>-0.000</sub>	3.250 <sup>+0.000</sup> <sub>-0.009</sub>	4.000 <sup>+0.004</sup> <sub>-0.000</sub>	\$ 19.31
DPU37-3.25-50	3-1/4	4	0.500	0.531 <sup>+0.015</sup> <sub>-0.000</sub>	3.250 <sup>+0.000</sup> <sub>-0.009</sub>	4.000 <sup>+0.004</sup> <sub>-0.000</sub>	19.98
DPU37-3.25-62	3-1/4	4	0.625	0.656 <sup>+0.015</sup> <sub>-0.000</sub>	3.250 <sup>+0.000</sup> <sub>-0.009</sub>	4.000 <sup>+0.004</sup> <sub>-0.000</sub>	19.98
DPU37-3.50-37	3-1/2	4-1/4	0.375	0.406 <sup>+0.015</sup> <sub>-0.000</sub>	3.500 <sup>+0.000</sup> <sub>-0.009</sub>	4.250 <sup>+0.004</sup> <sub>-0.000</sub>	20.32
DPU37-3.75-37	3-3/4	4-1/2	0.375	0.406 <sup>+0.015</sup> <sub>-0.000</sub>	3.750 <sup>+0.000</sup> <sub>-0.009</sub>	4.500 <sup>+0.004</sup> <sub>-0.000</sub>	24.28
DPU37-3.75-50	3-3/4	4-1/2	0.500	0.531 <sup>+0.015</sup> <sub>-0.000</sub>	3.750 <sup>+0.000</sup> <sub>-0.009</sub>	4.500 <sup>+0.004</sup> <sub>-0.000</sub>	24.28
DPU37-3.75-62	3-3/4	4-1/2	0.625	0.656 <sup>+0.015</sup> <sub>-0.000</sub>	3.750 <sup>+0.000</sup> <sub>-0.009</sub>	4.500 <sup>+0.004</sup> <sub>-0.000</sub>	24.28
DPU37-4.25-37	4-1/4	5	0.375	0.406 <sup>+0.015</sup> <sub>-0.000</sub>	4.250 <sup>+0.000</sup> <sub>-0.009</sub>	5.000 <sup>+0.004</sup> <sub>-0.000</sub>	24.38
DPU37-4.25-50	4-1/4	5	0.500	0.531 <sup>+0.015</sup> <sub>-0.000</sub>	4.250 <sup>+0.000</sup> <sub>-0.009</sub>	5.000 <sup>+0.004</sup> <sub>-0.000</sub>	24.38
DPU37-4.25-62	4-1/4	5	0.625	0.656 <sup>+0.015</sup> <sub>-0.000</sub>	4.250 <sup>+0.000</sup> <sub>-0.009</sub>	5.000 <sup>+0.004</sup> <sub>-0.000</sub>	25.24
DPU37-4.37-50	4-3/8	5-1/8	0.500	0.531 <sup>+0.015</sup> <sub>-0.000</sub>	4.375 <sup>+0.000</sup> <sub>-0.009</sub>	5.125 <sup>+0.004</sup> <sub>-0.000</sub>	25.46
DPU37-4.50-37	4-1/2	5-1/4	0.375	0.406 <sup>+0.015</sup> <sub>-0.000</sub>	4.500 <sup>+0.000</sup> <sub>-0.009</sub>	5.250 <sup>+0.004</sup> <sub>-0.000</sub>	26.36
DPU37-4.50-50	4-1/2	5-1/4	0.500	0.531 <sup>+0.015</sup> <sub>-0.000</sub>	4.500 <sup>+0.000</sup> <sub>-0.009</sub>	5.250 <sup>+0.004</sup> <sub>-0.000</sub>	27.58
DPU37-4.50-62	4-1/2	5-1/4	0.625	0.656 <sup>+0.015</sup> <sub>-0.000</sub>	4.500 <sup>+0.000</sup> <sub>-0.009</sub>	5.250 <sup>+0.004</sup> <sub>-0.000</sub>	29.65
DPU37-4.75-50	4-3/4	5-1/2	0.500	0.531 <sup>+0.015</sup> <sub>-0.000</sub>	4.750 <sup>+0.000</sup> <sub>-0.009</sub>	5.500 <sup>+0.004</sup> <sub>-0.000</sub>	30.98
DPU37-4.75-62	4-3/4	5-1/2	0.625	0.656 <sup>+0.015</sup> <sub>-0.000</sub>	4.750 <sup>+0.000</sup> <sub>-0.009</sub>	5.500 <sup>+0.004</sup> <sub>-0.000</sub>	30.98
DPU37-5.00-50	5	5-3/4	0.500	0.531 <sup>+0.015</sup> <sub>-0.000</sub>	5.000 <sup>+0.000</sup> <sub>-0.010</sub>	5.750 <sup>+0.004</sup> <sub>-0.000</sub>	32.16
DPU37-5.25-37	5-1/4	6	0.375	0.406 <sup>+0.015</sup> <sub>-0.000</sub>	5.250 <sup>+0.000</sup> <sub>-0.010</sub>	6.000 <sup>+0.004</sup> <sub>-0.000</sub>	38.78
DPU37-5.25-50	5-1/4	6	0.500	0.531 <sup>+0.015</sup> <sub>-0.000</sub>	5.250 <sup>+0.000</sup> <sub>-0.010</sub>	6.000 <sup>+0.004</sup> <sub>-0.000</sub>	38.78
DPU37-5.25-62	5-1/4	6	0.625	0.656 <sup>+0.015</sup> <sub>-0.000</sub>	5.250 <sup>+0.000</sup> <sub>-0.010</sub>	6.000 <sup>+0.004</sup> <sub>-0.000</sub>	38.78
DPU37-5.50-37	5-1/2	6-1/4	0.375	0.406 <sup>+0.015</sup> <sub>-0.000</sub>	5.500 <sup>+0.000</sup> <sub>-0.010</sub>	6.250 <sup>+0.004</sup> <sub>-0.000</sub>	39.11
DPU37-5.75-37	5-3/4	6-1/2	0.375	0.406 <sup>+0.015</sup> <sub>-0.000</sub>	5.750 <sup>+0.000</sup> <sub>-0.010</sub>	6.500 <sup>+0.004</sup> <sub>-0.000</sub>	39.38
DPU37-5.75-62	5-3/4	6-1/2	0.625	0.656 <sup>+0.015</sup> <sub>-0.000</sub>	5.750 <sup>+0.000</sup> <sub>-0.010</sub>	6.500 <sup>+0.004</sup> <sub>-0.000</sub>	39.38
DPU37-6.00-50	6	6-3/4	0.500	0.531 <sup>+0.015</sup> <sub>-0.000</sub>	6.000 <sup>+0.000</sup> <sub>-0.010</sub>	6.750 <sup>+0.005</sup> <sub>-0.000</sub>	47.75
DPU37-6.25-37	6-1/4	7	0.375	0.406 <sup>+0.015</sup> <sub>-0.000</sub>	6.250 <sup>+0.000</sup> <sub>-0.010</sub>	7.000 <sup>+0.005</sup> <sub>-0.000</sub>	48.69
DPU37-6.25-50	6-1/4	7	0.500	0.531 <sup>+0.015</sup> <sub>-0.000</sub>	6.250 <sup>+0.000</sup> <sub>-0.010</sub>	7.000 <sup>+0.005</sup> <sub>-0.000</sub>	56.14
DPU37-6.25-62	6-1/4	7	0.625	0.656 <sup>+0.015</sup> <sub>-0.000</sub>	6.250 <sup>+0.000</sup> <sub>-0.010</sub>	7.000 <sup>+0.005</sup> <sub>-0.000</sub>	57.96
DPU37-6.50-62	6-1/2	7-1/4	0.625	0.656 <sup>+0.015</sup> <sub>-0.000</sub>	6.500 <sup>+0.000</sup> <sub>-0.010</sub>	7.250 <sup>+0.005</sup> <sub>-0.000</sub>	59.12
DPU37-6.75-50	6-3/4	7-1/2	0.500	0.531 <sup>+0.015</sup> <sub>-0.000</sub>	6.750 <sup>+0.000</sup> <sub>-0.010</sub>	7.500 <sup>+0.005</sup> <sub>-0.000</sub>	61.67

# STYLE DPU HEAVY DUTY PISTON U-SEALS



PISTON U-SEALS

Part Number	A NOM. I.D.	B NOM. O.D.	C HT.	D GROOVE WIDTH	E GROOVE DIAMETER	G BORE DIAMETER	List Price
<b>3/8" C/S</b>							
DPU37-7.25-37	7-1/4	8	0.375	0.406 +0.015 -0.000	7.250 +0.000 -0.011	8.000 +0.005 -0.000	\$ 66.56
DPU37-7.25-50	7-1/4	8	0.500	0.531 +0.015 -0.000	7.250 +0.000 -0.011	8.000 +0.005 -0.000	66.56
DPU37-7.25-62	7-1/4	8	0.625	0.656 +0.015 -0.000	7.250 +0.000 -0.011	8.000 +0.005 -0.000	66.56
<b>.383" C/S</b>							
DPU38-2.50-48	2-1/2	3.266	0.486	0.517 +0.015 -0.000	2.500 +0.000 -0.008	3.266 +0.003 -0.000	\$ 21.81
DPU38-2.00-48	2	2.766	0.486	0.517 +0.015 -0.000	2.000 +0.000 -0.008	2.766 +0.003 -0.000	19.21
<b>1/2" C/S</b>							
DPU50-4.12-59	4-1/8	5-1/8	0.590	0.649 +0.015 -0.000	4.125 +0.000 -0.009	5.125 +0.004 -0.000	\$ 30.43
DPU50-5.00-50	5	6	0.500	0.531 +0.015 -0.000	5.000 +0.000 -0.010	6.000 +0.004 -0.000	46.05
DPU50-5.25-62	5-1/4	6-1/4	0.625	0.656 +0.015 -0.000	5.250 +0.000 -0.010	6.250 +0.004 -0.000	41.75
DPU50-5.50-62	5-1/2	6-1/2	0.625	0.656 +0.015 -0.000	5.500 +0.000 -0.010	6.500 +0.004 -0.000	42.52
DPU50-6.00-75	6	7	0.750	0.781 +0.015 -0.000	6.000 +0.000 -0.010	7.000 +0.005 -0.000	49.77
DPU50-6.50-62	6-1/2	7-1/2	0.625	0.656 +0.015 -0.000	6.500 +0.000 -0.010	7.500 +0.005 -0.000	62.16
DPU50-6.50-75	6-1/2	7-1/2	0.750	0.781 +0.015 -0.000	6.500 +0.000 -0.010	7.500 +0.005 -0.000	62.16
DPU50-7.00-50	7	8	0.500	0.531 +0.015 -0.000	7.000 +0.000 -0.011	8.000 +0.005 -0.000	78.01
DPU50-7.00-75	7	8	0.750	0.781 +0.015 -0.000	7.000 +0.000 -0.011	8.000 +0.005 -0.000	66.56
DPU50-7.50-62	7-1/2	8-1/2	0.625	0.656 +0.015 -0.000	7.500 +0.000 -0.011	8.500 +0.005 -0.000	69.57
DPU50-7.50-75	7-1/2	8-1/2	0.750	0.781 +0.015 -0.000	7.500 +0.000 -0.011	8.500 +0.005 -0.000	72.72
DPU50-8.00-75	8	9	0.750	0.781 +0.015 -0.000	8.000 +0.000 -0.011	9.000 +0.005 -0.000	75.75
DPU50-9.00-62	9	10	0.625	0.656 +0.015 -0.000	9.000 +0.000 -0.011	10.000 +0.005 -0.000	96.50
DPU50-9.00-75	9	10	0.750	0.781 +0.015 -0.000	9.000 +0.000 -0.011	10.000 +0.005 -0.000	99.85
DPU50-10.00-62	10	11	0.625	0.656 +0.015 -0.000	10.000 +0.000 -0.011	11.000 +0.005 -0.000	172.27
DPU50-10.00-75	10	11	0.750	0.781 +0.015 -0.000	10.000 +0.000 -0.011	11.000 +0.005 -0.000	110.74
DPU50-11.00-62	11	12	0.625	0.656 +0.015 -0.000	11.000 +0.000 -0.012	12.000 +0.006 -0.000	122.50
DPU50-11.00-75	11	12	0.750	0.781 +0.015 -0.000	11.000 +0.000 -0.012	12.000 +0.006 -0.000	165.82
<b>5/8" C/S</b>							
DPU62-3.50-56	3-1/2	4-3/4	0.563	0.594 +0.015 -0.000	3.500 +0.000 -0.009	4.750 +0.004 -0.000	\$ 49.75
DPU62-9.25-75	9-1/4	10-1/2	0.750	0.781 +0.015 -0.000	9.250 +0.000 -0.011	10.500 +0.005 -0.000	105.52

# STYLE PU URETHANE PISTON U-SEALS

Style PU seals are molded from high quality urethane and designed specifically for piston applications.



## SEAL INFORMATION

MATERIAL	90A URETHANE
TEMPERATURE RANGE	-40° TO +225° F
PRESSURE RANGE	0 TO 5,000 PSI
PART NUMBER	(Prefix)(CS) - (Inside Dia) - (Height)

PISTON U-SEALS

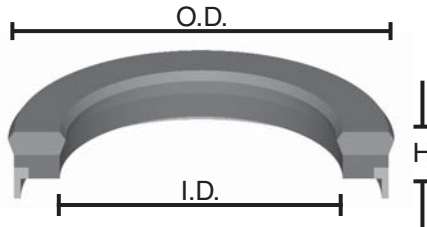
Part Number	I.D.	O.D.	H.	List Price
<b>1/8" C/S</b>				
PU12-1.25-25	1-1/4	1-1/2	1/4	\$ 5.30
<b>3/16" C/S</b>				
PU18-0.75-31	3/4	1-1/8	5/16	\$ 5.86
PU18-1.62-31	1-5/8	2	5/16	8.27
PU18-2.12-25	2-1/8	2-1/2	1/4	10.06
PU18-2.12-37	2-1/8	2-1/2	3/8	9.95
PU18-2.62-37	2-5/8	3	3/8	10.05
<b>1/4" C/S</b>				
PU25-2.00-25	2	2-1/2	1/4	\$ 9.82
PU25-3.00-37	3	3-1/2	3/8	16.25
PU25-3.50-37	3-1/2	4	3/8	17.11
PU25-4.50-37	4-1/2	5	3/8	18.19

Part Number	I.D.	O.D.	H.	List Price
<b>.29" C/S</b>				
PU29-1.61-38	1.61	2.19	0.380	\$ 27.09
<b>3/8" C/S</b>				
PU37-5.25-50	5-1/4	6	1/2	\$ 22.70
<b>1/2" C/S</b>				
PU50-2.00-50	2	3	1/2	\$ 28.41
PU50-2.25-50	2-1/4	3-1/4	1/2	34.57
PU50-3.00-50	3	4	1/2	39.20

## STYLE UFN PISTON SEALS



Constructed of a rubber seal lip with a rubberized fabric heel, these seals feature a polyacetal bearing ring or a polyacetal anti-extrusion ring. These seals offer excellent sealing ability and high pressure capability. They are commonly used with the SR retention rings.



**UFN-PWO**



**UFN-UEO**



**UFN-UWO**

SEAL INFORMATION	
MATERIAL	RUBBER, FABRIC, ACETAL
TEMPERATURE RANGE	-22° TO +212° F
PRESSURE RANGE	0 TO 5,800 PSI
PART NUMBER	(Prefix)(CS) - (Inside Dia) - (Height)

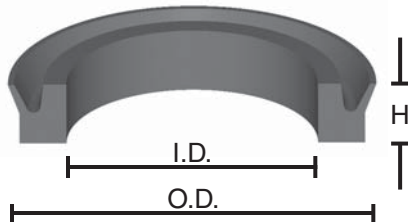
PISTON U-SEALS

Part Number	I.D.	O.D.	H.	List Price
<b>UFN-PWO</b>				
UFN25-2.00-31PWO	2	2-1/2	5/16	\$ 13.41
UFN31-1.12-43PWO	1-1/8	1-3/4	7/16	8.43
UFN31-1.37-37PWO	1-3/8	2	3/8	9.43
UFN31-1.37-43PWO	1-3/8	2	7/16	9.43
UFN31-1.87-43PWO	1-7/8	2-1/2	7/16	13.41
<b>UFN-UEO</b>				
UFN31-1.75-43UEO	1-3/4	2-3/8	7/16	\$ 11.04
UFN37-2.25-50UEO	2-1/4	3	1/2	13.32
UFN37-3.50-56UEO	3-1/2	4-1/4	9/16	19.47
UFN50-4.00-75UEO	4	5	3/4	28.45
<b>UFN-UWO</b>				
UFN25-1.00-37UWO	1	1-1/2	3/8	\$ 7.60

Part Number	I.D.	O.D.	H.	List Price
<b>UFN-UWO</b>				
UFN27-0.87-46UWO	7/8	1.41	0.460	\$ 6.60
UFN31-1.16-46UWO	1.16	1.78	0.460	7.06
UFN31-1.37-37UWO	1-3/8	2	3/8	9.10
UFN31-1.62-43UWO	1-5/8	2-1/4	7/16	8.98
UFN31-1.75-43UWO	1-3/4	2-3/8	7/16	11.04
UFN31-1.87-37UWO	1-7/8	2-1/2	3/8	10.26
UFN31-2.00-43UWO	2	2-5/8	7/16	9.68
UFN31-2.12-46UWO	2-1/8	2-3/4	0.460	11.60
UFN37-2.00-56UWO	2	2-3/4	9/16	14.91
UFN37-2.25-50UWO	2-1/4	3	1/2	14.20
UFN37-2.75-56UWO	2-3/4	3-1/2	9/16	13.76
UFN37-3.25-56UWO	3-1/4	4	9/16	15.35
UFN37-3.75-56UWO	3-3/4	4-1/2	9/16	26.66

## STYLE UKP PISTON U-SEALS

UKP u-seals are designed to act as a positive sealing, low friction replacement for conventional rubber u-seals. Molded from polyurethane, UKP u-seals provide long life and high resistance against extrusion. Low friction allows these seals to run smoothly in a lubricated or non-lubricated cylinder. Available for bore sealing, the flexible dynamic lip provides very low breakaway friction and steady motion.



### SEAL INFORMATION

MATERIAL	90A URETHANE
TEMPERATURE RANGE	-40° TO +200° F
PRESSURE RANGE	0 TO 150 PSI
PART NUMBER	(Prefix)(CS) - (Outside diameter)

Part Number	I.D.	O.D.	H.	List Price
<b>3/32" C/S</b>				
UKP09-0.37	3/16	3/8	3/32	\$ 3.25
UKP09-0.68	1/2	11/16	3/32	3.47
<b>1/8" C/S</b>				
UKP12-0.56	5/16	9/16	1/8	\$ 4.47
UKP12-0.62	3/8	5/8	1/8	4.49
UKP12-0.75	1/2	3/4	1/8	4.52
UKP12-0.87	5/8	7/8	1/8	4.54
UKP12-1.00	3/4	1	1/8	4.57
UKP12-1.06	13/16	1-1/16	1/8	4.57
UKP12-1.12	7/8	1-1/8	1/8	4.57
UKP12-1.25	1	1-1/4	1/8	4.62
UKP12-1.50	1-1/4	1-1/2	1/8	4.68
UKP12-1.87	1-5/8	1-7/8	1/8	5.05
UKP12-2.00	1-3/4	2	1/8	5.17
UKP12-2.75	2-1/2	2-3/4	1/8	6.10
<b>5/32" C/S</b>				
UKP15-1.50	1-3/16	1-1/2	5/32	\$ 4.89
UKP15-1.56	1-1/4	1-9/16	5/32	4.89
<b>3/16" C/S</b>				
UKP18-1.75	1-3/8	1-3/4	3/16	\$ 5.10
UKP18-2.00	1-5/8	2	3/16	5.17
UKP18-2.25	1-7/8	2-1/4	3/16	5.33

Part Number	I.D.	O.D.	H.	List Price
<b>3/16" C/S</b>				
UKP18-2.50	2-1/8	2-1/2	3/16	\$ 5.48
UKP18-2.62	2-1/4	2-5/8	3/16	5.60
UKP18-4.00	3-5/8	4	3/16	7.00
<b>7/32" C/S</b>				
UKP21-3.00	2-9/16	3	7/32	\$ 10.54
UKP21-3.25	2-13/16	3-1/4	7/32	11.46
<b>1/4" C/S</b>				
UKP25-3.00	2-1/2	3	1/4	\$ 10.92
UKP25-3.25	2-3/4	3-1/4	1/4	11.84
UKP25-3.50	3	3-1/2	1/4	12.76
UKP25-4.00	3-1/2	4	1/4	14.59
UKP25-5.00	4-1/2	5	1/4	18.36
UKP25-6.00	5-1/2	6	1/4	21.87
UKP25-7.00	6-1/2	7	1/4	33.75
UKP25-8.00	7-1/2	8	1/4	36.03
UKP25-10.00	9-1/2	10	1/4	48.03
<b>5/16" C/S</b>				
UKP31-6.00	5-3/8	6	5/16	\$ 26.24
UKP31-8.00	7-3/8	8	5/16	34.83
<b>3/8" C/S</b>				
UKP37-10.00	9-1/4	10	3/8	\$ 58.80